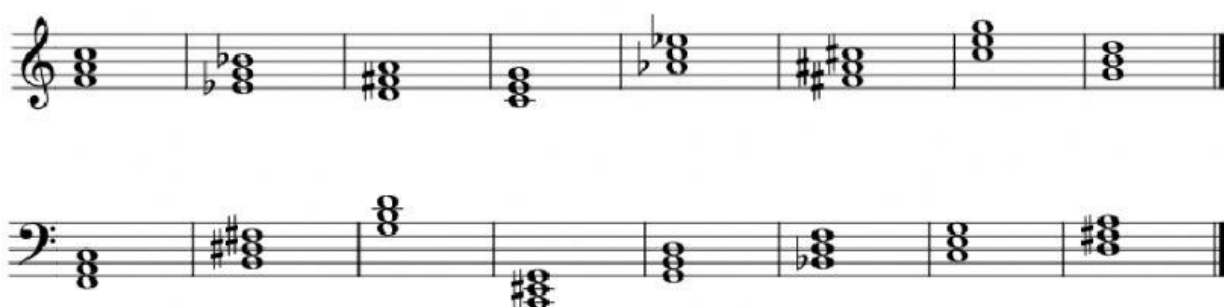




# BUILDING MAJOR TRIADS.....

1. THE FOLLOWING CHORDS ARE IN ROOT POSITION. THAT MEANS THAT THE FIRST NOTE OF THE SCALE, OR "DO" IS THE NOTE ON THE BOTTOM. DETERMINE WHAT KEY THE CHORD IS IN BY DETERMINING "DO" AND WRITE THE KEY SIGNATURE NAME BELOW THE CHORD. BE SURE TO USE THE FLAT OR SHARP WHEN NEEDED.



2. THE FOLLOWING CHORDS ARE IN 1<sup>ST</sup> INVERSION. THAT MEANS THAT THE FIRST NOTE OF THE SCALE, OR "DO" IS THE NOTE ON THE TOP. DETERMINE WHAT KEY THE CHORD IS IN BY DETERMINING "DO" AND WRITE THE KEY SIGNATURE NAME BELOW THE CHORD.

