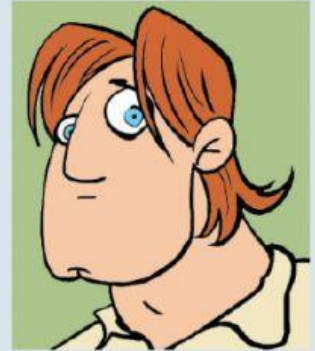


BEFORE READING

1 Here are some of the people in the story. Match the information about them with the pictures.



a Professor Otto Lidenbrock

b Axel

c Gräuben

d Hans Bjelke

- 1** He comes from Iceland. He's strong and very quiet.
- 2** He's a science teacher at the Johanneum, a school in Hamburg.
- 3** She's the daughter of a good friend of Professor Lidenbrock's.
- 4** He lives and works with his uncle, Professor Lidenbrock, because his mother and father are dead.

2 Three of the people go on a journey to the centre of the Earth. Which three?

3 What do they find when they go underground? Tick the boxes.



a a sea



b monsters



c trees



d a town