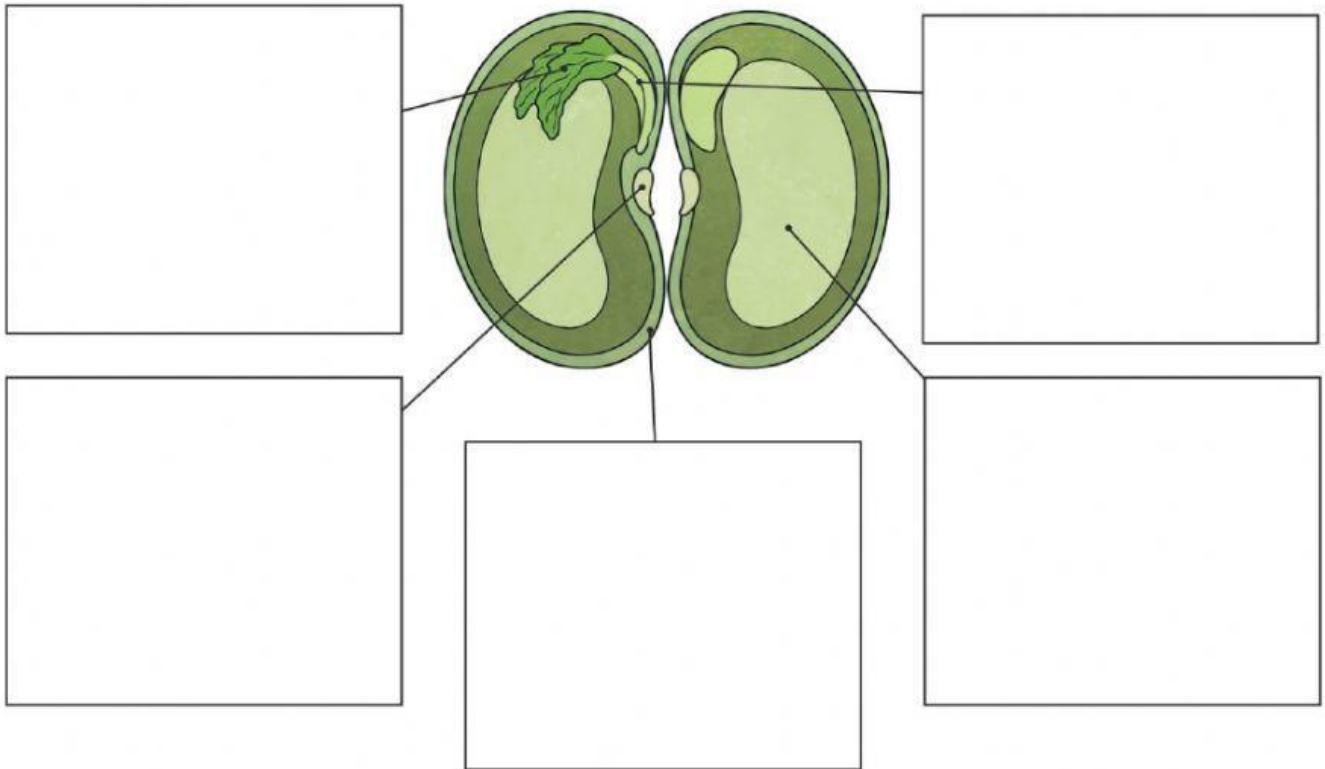


Parts of a Seed

Read, cut, sort and paste the information below into the diagram.



(Micropyle)

It is a tiny pore in the testa that permits water to enter the embryo before active germination.

First Root

(Radicle)

First part to emerge from the seed during germination and grows downward to the soil.

Food Storage

(Cotyledons)

A store of food for the young plant to use until it has grown enough to make its own food.

First Shoot

(Plumule)

This later develops into the stem, leaves and flowers.

Seed Coating

A tough outer covering that protects the inside of the seed.