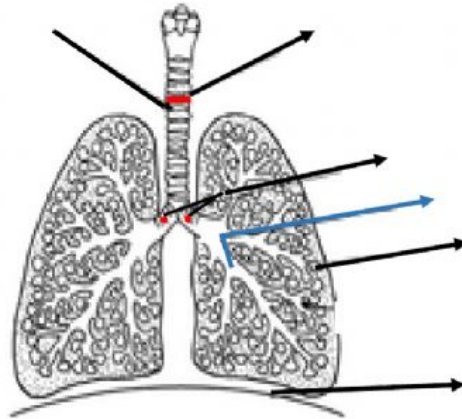


Biology Test- The Respiratory System

2et

A) Label the diagram



B) Complete the paragraph with the appropriate word. There is an extra Word and one of the words can be used twice.

TRACHEA CARTILAGE BRONCHI BRONCHIOLES ALVEOLI
 SWALLOW MUCUS EPIGLOTTIS BRONCHUS DIFFUSES
 CARBON DIOXIDE CELL OXYGEN CAPILLARIES ONE

The Respiratory Pathway

Air passes into the nasal cavity, where dust and Bacteria are filtered out by sticky _____. The air is drawn down the _____, which is kept open by rings of _____.

At the top of the trachea there is a small flap known as the _____. When you _____ it closes off the _____ to prevent food going into the lungs. At the bottom the Trachea divides into two _____. Each _____ subdivides again into a mass of fine branches known as _____. These end in tiny hollow bags with bulb-like pockets called _____ in which gases are exchanged. The walls of the Alveoli are only _____ cell thick, and their outer surface is covered by a dense network of _____. The blood flowing through these capillaries absorbs _____, which _____ through the alveoli and capillary walls. At the same time blood releases _____ which diffuses in the opposite direction into the alveoli.

c) Put the sentences in the right order to describe process of inhalation.

- _____ Air is drawn into the lungs
- _____ Air pressure in the chest cavity decreases
- _____ Lungs expand
- _____ The diaphragm contracts and flattens
- _____ The muscles between the ribs contract and move the ribs upwards and outwards.