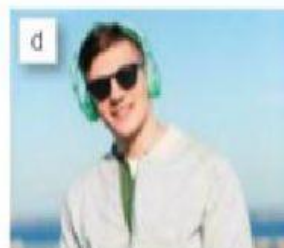




2B Weekdays, weekends

1 Match the activities in the box with pictures a–h.

play tennis read a book go to the cinema watch TV
go for a walk listen to music study meet friends



2 In pairs, talk about the activities in exercise 1. What activities do you do?

I listen to music in the car. I don't go to the cinema.

Discussion



3 2.8 Watch or listen to the first part of *Learning Curve*. What do they talk about? Tick (✓) the two correct answers.

- a free-time activities and jobs ☐
- b free-time activities ☐
- c people who don't have any free time ☐



Skill listening for names, places, days and times

Names, places, days and times are important pieces of information when you listen.

- Important words like names, places, days and times are usually stressed. Listen for stressed words.
- We often use prepositions with places, days and times: *in France*, *on Monday*, *at 6.30*, etc. Listen for the prepositions *in*, *on* and *at*.
- Remember to use capital letters for names, places and days when you write them down.


4 A 2.8 Read the Skill box. Watch or listen again. Complete the table with words from the box.

lawyer Argentinian dance teacher Puerto Rican
Marcus English Maggie Pablo tennis coach

Name	Nationality	Job

B In pairs, talk about people you know. Do they love their jobs? Why?/Why not?


My friend Justyna's Polish. She's a receptionist. She likes her job, but she doesn't love it.

- 5  2.9 Watch or listen to the second part of the show. Complete the sentences with the names and cities in the box.

Toronto Chip New York Gillian Khan London



- | | | |
|-------------------|--------------------|------------------|
| 1 This is _____. | 2 This is _____. | 3 This is _____. |
| She's from _____. | He lives in _____. | He's from _____. |

- 6  2.9 Watch or listen again. Are the sentences true (T) or false (F)?

- | | |
|---|-------|
| 1 Gillian meets friends on Saturday. | _____ |
| 2 She goes for a run on Monday mornings. | _____ |
| 3 Khan watches football on Saturday evenings. | _____ |
| 4 He studies Italian and Spanish. | _____ |
| 5 Chip starts work at 9 a.m. every day. | _____ |
| 6 He finishes work at 4 p.m. | _____ |

- 7 In pairs, talk about the people in the video. Answer the questions.

- 1 Where do they work?
- 2 What activities do they do in their free time?
- 3 What do you think of their jobs?
- 4 Do you do the same activities in your free time?

2C Find a flatmate

- 1 Look at the pictures in the text. What do you think 'speed-flatmating' is?
- 2 A Read the text and check your answer to exercise 1.
B Look at the questions. Who asks them: people who need a flatmate or people who need a room in a flat?



How to find the perfect flatmate


You have a great flat and you need a new flatmate. How do you find one? Why not try speed-flatmating? It's a great way to find the perfect flatmate.


The idea for speed-flatmating comes from speed-dating. Speed-dating events are for single people who want to find a boyfriend or girlfriend. Speed-flatmating is the same idea, but it's for people who need a flatmate or a room. You meet new people, chat and ask questions.



What questions do you ask?

- 1 Where do you live now?
- 2 Where's your flat?
- 3 What do you do?
- 4 Are you a tidy person?
- 5 Do you have a partner?
- 6 Does your partner live near here?
- 7 Does your flat have a garden?
- 8 What do you do in your free time?

3 A  2.11 Bruce is at a speed-flatmating event. He is looking for a flatmate. Listen and decide who is the best flatmate for Bruce – Mike, Phil or Andrea. Why?

B  2.11 Listen again. Are the sentences true (T) or false (F)?

- | | |
|---|--|
| 1 Mike and Bruce work at the weekend. ____ | 4 Phil doesn't like his job. ____ |
| 2 Bruce is a DJ in a club. ____ | 5 Andrea doesn't live with her parents. ____ |
| 3 Phil doesn't work near Bruce's flat. ____ | 6 Bruce has a partner. ____ |

4 Match questions 1–5 with answers a–e.

- | | |
|---------------------------------|---------------------------------------|
| 1 Where do you work? | a He lives in another city. |
| 2 What do you do? | b I work in a local restaurant. |
| 3 Do you work in the evening? | c No, I don't. Not at the moment. |
| 4 Where does your partner live? | d I'm an accountant. |
| 5 Do you have a partner? | e Yes, I do. I finish at about 11.30. |

5 A Look at the questions in exercise 4. Which questions have a *yes/no* answer?

B Complete the rule. Then read the Grammar box.

We use the auxiliary verbs ¹_____ and ²_____ to make questions in the present simple.



Grammar present simple: questions

yes/no questions and short answers:

Do you work long hours? *Yes, I do.* *No, I don't.*
Does she go out? *Yes, she does.* *No, she doesn't.*

Wh- questions:

What do you do in your free time?
Where do you work?
When does he finish?

Look! We don't use *do* and *don't* in questions with the verb *be*:

Do you live in Oxford?
Are you from Oxford?

Go to Grammar practice: present simple: questions, page 115

2C Present simple: questions

We use questions in the present simple to ask about things that are facts, or regular routines. We form questions in the present simple with *do/does* + subject + infinitive

Do you like football?

Does she live in a big flat?

Does he work at the weekend?

Do they go out a lot?


We form short answers with *Yes/No*, + subject + *do/does/don't/doesn't*.

Yes, I do.

No, I don't.

Yes, she does.

No, she doesn't

 2.12	I / you / we / they	he / she / it
?	Do they live in the city?	Does he live with you?
	Do we have more time?	Does it have a garden?
	Do you work in a café?	Does she work in a hotel?
Y/N	Yes, I do . / No, I don't .	Yes, she does . / No, she doesn't .

If we want more information, we put a question word (*what, where, when, why, who, how*, etc.) before *do/does* at the start of the question.

Where do you live?

Who do you live with?

What does he do at the weekend?

How do you go to work?

When does the class start?

Why do you like football?

1 Put the words in the correct order to make questions.

1 like / you / do / Spanish / food / ?

2 in / Santiago / does / Sandra / live / ?

3 they / do / Hong Kong / work / in / ?

4 Eric / does / drive / a car / ?

5 finish / do / we / at / 5 p.m. / ?

6 do / teach / English / you / ?

2 Look at the short answers to the questions in exercise 1.
Correct the mistakes.

1 Yes, I like. _____

2 Yes, she do. _____

3 No, they not. _____

4 No, he don't drive. _____

5 Yes, we does. _____

6 Yes, I teach. _____

5 Write questions.



1 you / come from Australia

2 your flat / have / a TV

3 you / like films

4 when / you / go to work

5 where / your best friend / live

6 what / she / do