

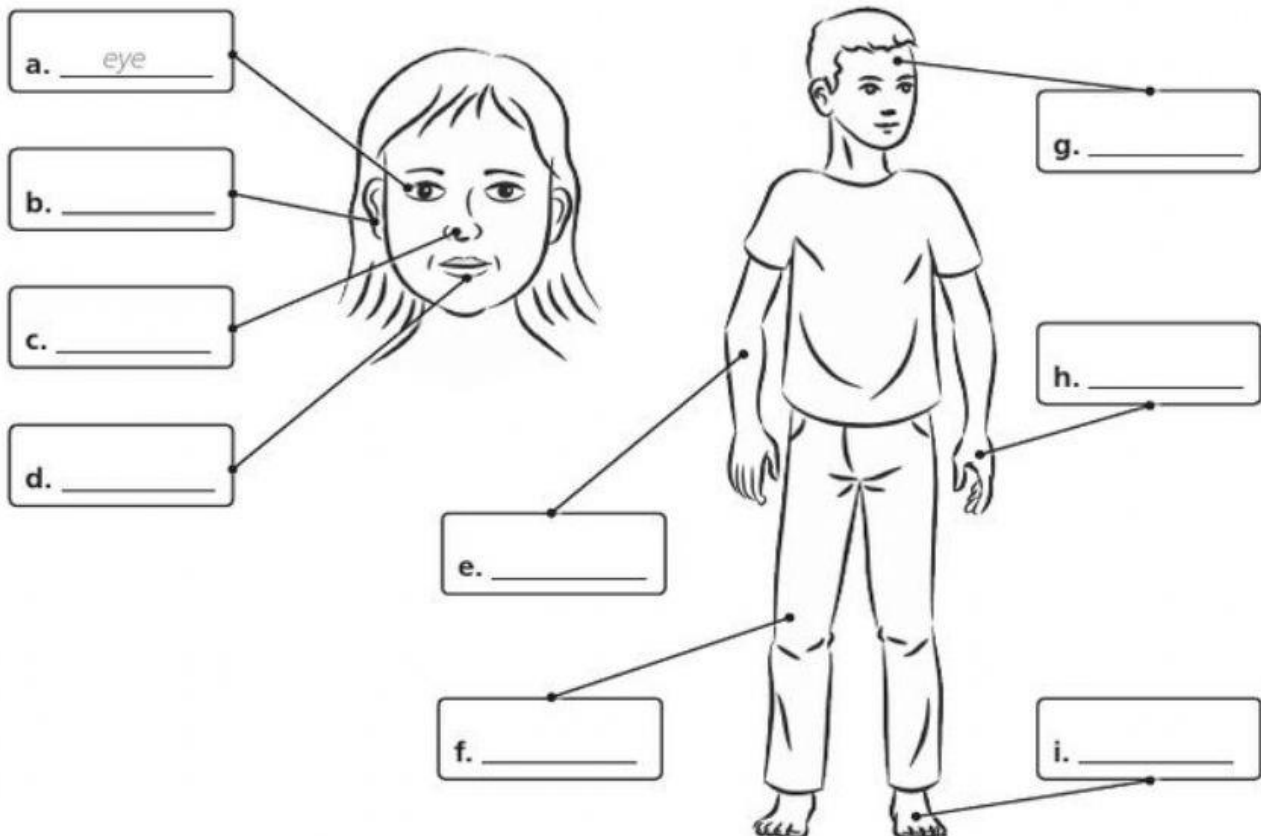
# UNIT 1 Diagnostic

Name: \_\_\_\_\_

Class: \_\_\_\_\_

## ① Label the body parts.

arm    mouth    leg    nose    foot    ear    hand    ~~eye~~    head



## ② Cross the odd one out.

- Circulatory system: ~~hand~~, heart, arteries, veins
- Respiratory system: lungs, nose, stomach, mouth
- Digestive system: stomach, mouth, intestine, lungs

## ③ Are these sentences true or false?

- Knees, elbows and knuckles are all examples of joints.
- The respiratory system helps us to digest food.
- We breathe in carbon dioxide and breathe out oxygen.
- The brain and the heart are organs.
- Pupils are found inside our ears.

<u>True</u> / false
true / false
true / false
true / false
true / false