

**Social Science Topic 3.**

**Name:** \_\_\_\_\_

**Date:** \_\_\_\_\_

**1) Water is found in the environment in different states. Write the states and give an example of each one. Make a picture in the boxes at the end of the exam. (0.25x6=1,5 ptos)**

State: \_\_\_\_\_

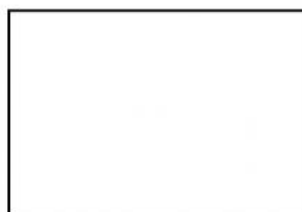
State: \_\_\_\_\_

State: \_\_\_\_\_

Example: \_\_\_\_\_

Example: \_\_\_\_\_

Example: \_\_\_\_\_



**2) Say whether these statements are true or false. (0.25x4=1 pto)**

- a) The hydrosphere helps to regulate the Earth's temperature.
- b) There are no living organisms in the hydrosphere.
- c) Water is polluted due to human action.
- d) The hydrosphere covers the 50% of the earth

**3) Correct the Wrong sentences. (0.25x2=0.5 ptos)**

---

---

**4) How is all the water in the hydrosphere distributed? (0.25x2=0.5 ptos)**

A. \_\_\_\_\_

B. \_\_\_\_\_

**5) Tell me 4 different places in which you can find water. (0,25x4=1 pto)**

A. \_\_\_\_\_

C. \_\_\_\_\_

B. \_\_\_\_\_

D. \_\_\_\_\_

**6) Fill in the gaps to form the definition of "river": (0,25x4=1 pto)**

**CONTINUOUS**

**WATER**

**SNOW**

**RAIN**

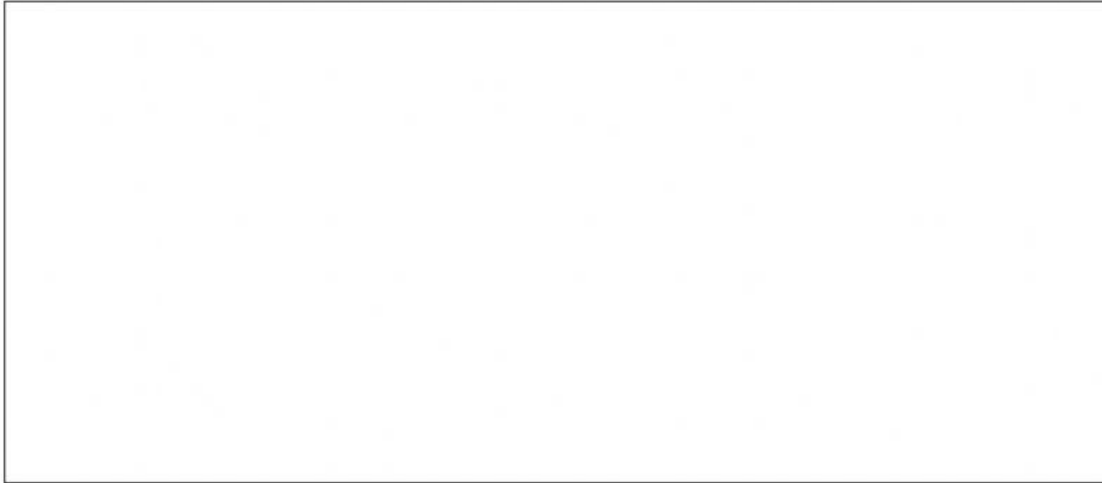
A river is a \_\_\_\_\_ flow of \_\_\_\_\_ formed by  
\_\_\_\_\_ water or melted \_\_\_\_\_.

7) Explain the water cycle and make a diagram. (1-point diagram+ 1 point explain)

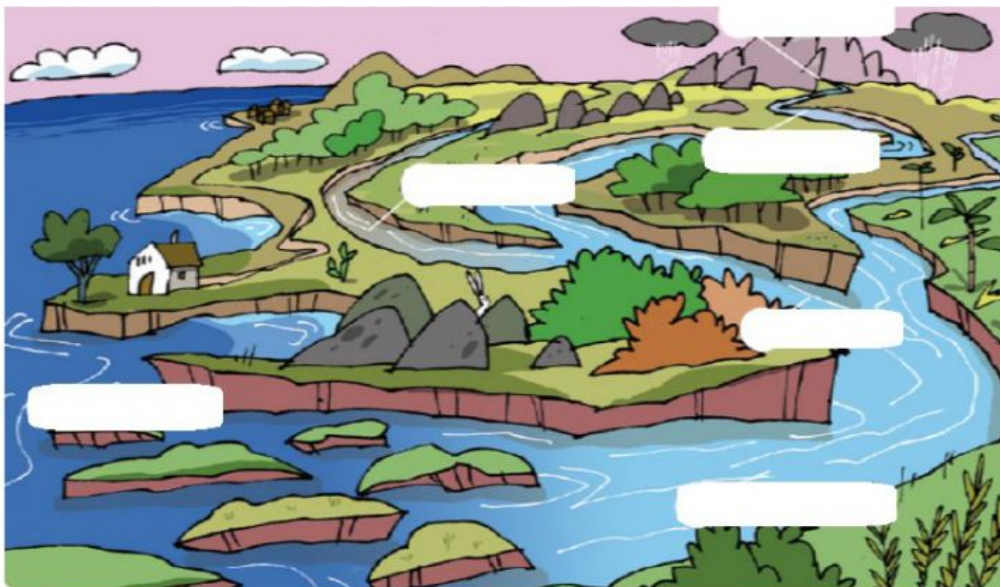
---

---

---



8) Write the name of each part of the river. (0,25x6= 1,5 points.)



9) Write the correct parts of the river. (0.33x3=1 pto)

<input type="text"/>	This course is at the end.
<input type="text"/>	This course is in the centre. If the land is flat, the river forms a loop called a meander.
<input type="text"/>	This course is at the beginning. There isn't much water in the river here, and it moves quickly. It carries sand and small stones.