

Part 1

1 Which sport will the woman learn on holiday?



A ☐

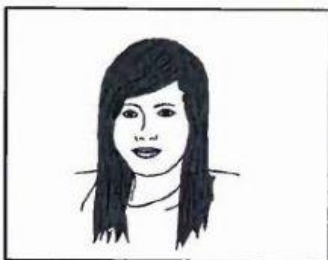


B ☐



C ☐

2 What does the girl's penfriend look like now?



A ☐

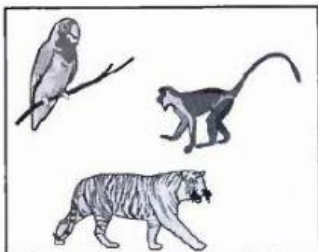


B ☐

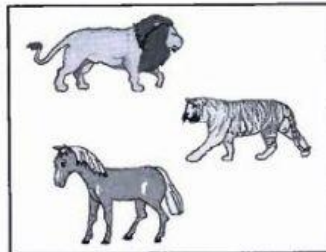


C ☐

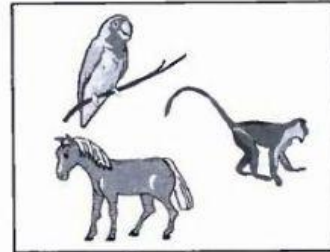
3 Which animals did the children see?



A ☐



B ☐



C ☐

4 Which TV programme is on first?



A ☐

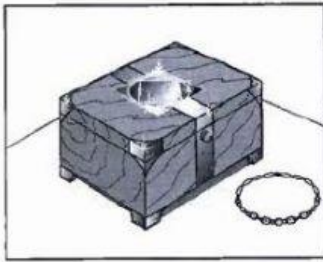


B ☐



C ☐

5 What does the boy decide to buy for his grandmother?



A ☐

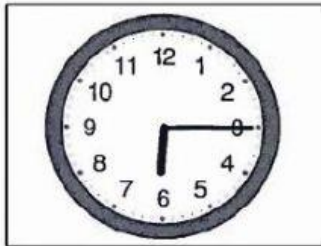


B ☐

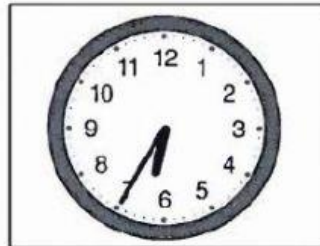


C ☐

6 What time is the man's appointment?



A ☐



B ☐



C ☐

7 What has the woman lost?



A ☐



B ☐



C ☐

Part 3

## Trip to Staunton Theatre

Meet at 6.00 p.m. at the (14) ..... of the school.

The name of the play is (15) .....

Get a copy of the play from the (16) .....

Each theatre ticket will cost (17) £.....

After the theatre – have (18) ..... and coffee.

On the return journey, the coach will stop at the  
(19) ..... and then the school.