

1. Połącz czasowniki z pierwszej kolumny z ich synonimami.

| | |
|------------|----------------|
| hear from | conduct |
| clean up | learn |
| carry out | complete |
| look into | wait |
| come apart | contact |
| hold on | fall to pieces |
| find out | search |
| fill in | tidy |

2. Uzupełnij zdania słowami z listy.

circuits system unipolar louvered doorbells chandeliers
spring floors

A switch is an example of a wiring _____.

The _____ switches are basically change-over switches.

The push-button in bipolar switches makes it possible to control two _____.

2-gang light switches are installed in _____.

A modified version of the landing switch makes it possible to use it on as many _____ as needed.

A closing switch is used to connect _____.

The _____ bounces the push-button back.

The _____ switches can be equipped with either two separate push buttons or a single three-state button.

3. Uzupełnij zdania słowami z listy.

Voltage Vector groups three-phase autotransformer
Measuring transformers secondary power primary

1. _____ are used for measuring the voltage of power and electricity.
2. The _____ winding of an electrical power transformer can be arranged in a zigzag - then it is labelled with a small letter 'z'.
3. A transformer used to process electricity is also known as a _____ transformer.

4. A specific type of transformer that has only one winding, which serves as both primary and secondary side, is called an _____.
5. Measuring transformers are used to reduce the _____.
6. _____ include the symbols Yy, Dy and Dz.
7. The _____ winding of an electrical power transformer can be arranged in a star or a delta.
8. The most common type of electrical power transformer is the _____ transformer.

4. Wybierz właściwą odpowiedź.

The rating plate contains information on the maximum _____.

It is possible to read information about _____ from a rating plate.

Rating plates also provide information about the transformer's _____ method.

Rating plates state the _____.

Correct selection of the _____ is critical for proper operation.

The S1 symbol on the _____ of the transformer indicates continuous operation.

Apparent power S is expressed in _____.

Standard transformers are designed to work in a _____ climate.

5. Odgadnij właściwe wyrazy lub wyrażenia. Niektóre litery zostały podane.

1. This takes place in, for instance, the voltage inverter: voltage...
I _ _ R _ _ S _
2. The type of winding in the transformer that has a lower voltage than the voltage in the secondary winding
P _ _ M _ _ _
3. A type of transformer circuit.
M _ G _ _ T _ _
4. A set of components through which electric current can flow: electrical...
C _ R _ _ _ T
5. Passes through the core. Magnetic...
F _ U _
6. One of the physical phenomena used in transformers.
E _ E _ _ _ M _ G _ _ _ C I _ _ U _ _ _ N
7. It usually has a secondary voltage of 24V
S _ _ _ T _ T _ _ _ S _ _ R _ _ R
8. A type of voltage in a transformer, also called the output voltage.
S _ _ _ N _ _ R _

6. Dopasuj podpisy do obrazków.

capacitor voltage transformer

one-phase transformer

autotransformer

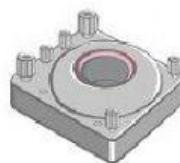
current transformer

overcurrent protection

three-phase transformer













7. Dopasuj nazwy narzędzi.

cordless drill

impact drill

jigsaw

heat gun

industrial vacuum cleaner

hammer drill













9. Połącz słowa z obu kolumn, aby powstały poprawne wyrażenia.

conductive _____

de-energised _____

mica _____

brush _____

stator _____

electric _____

burning _____

wear _____

unit

winding

rings

insulation

motor

emulsion

dust

marks