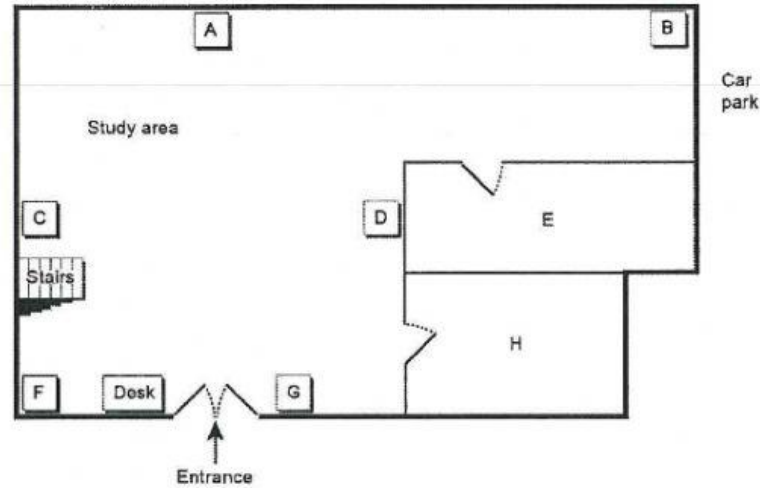


**Exercise 4.** Label the plan below. Write correct letters, **A-H**, next to questions 1-5 (*Track 7*)<sup>35</sup>

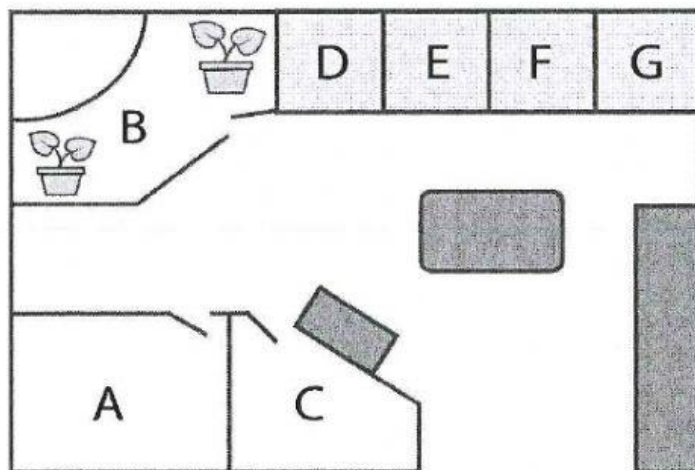
**Plan of Learning Resource Centre (Ground Floor)**



- |                      |                       |
|----------------------|-----------------------|
| 1. Newspapers .....  | 4. Café .....         |
| 2. Computers .....   | 5. Sports books ..... |
| 3. Photocopier ..... |                       |

**D - HOMEWORK**

**Exercise 1.** Identify the rooms in the office plan. Write the correct letter, A-G, next to the questions (*Track 8*)<sup>36</sup>

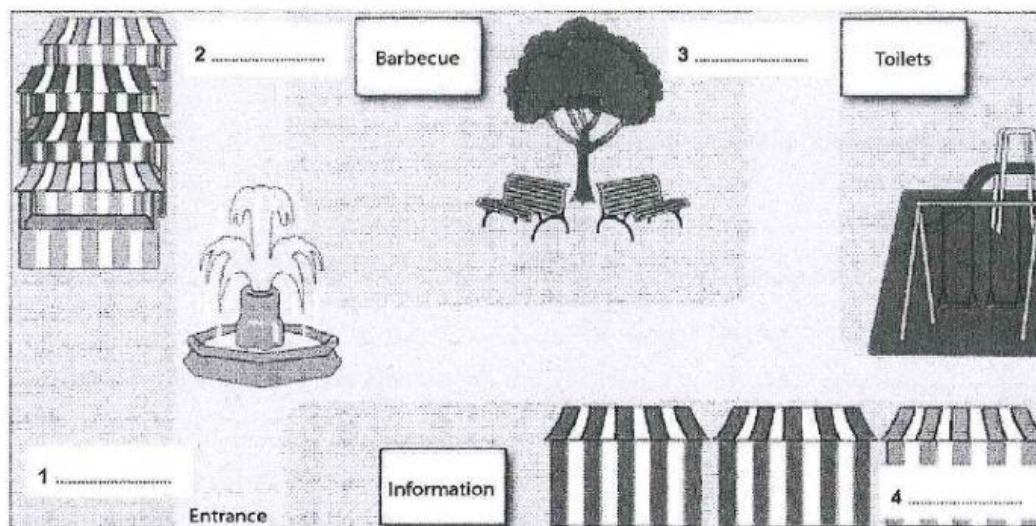


- |                              |                         |
|------------------------------|-------------------------|
| 1. Local Tours .....         | 4. Asian Region .....   |
| 2. Interstate Tours .....    | 5. General Office ..... |
| 3. International Tours ..... |                         |

**Exercise 2.** Label the plan below. Choose the correct letter A-F and write the answers next to questions 1-4. (Track 9)<sup>37</sup>

- A. farm animals
- B. fresh bread
- C. ticket booth

- D. picnic area
- E. second-hand book stall
- F. cookery shows



## E - GLOSSARY

**Exercise 1.** Complete the gaps with a word from the box

take      past      on      straight      at      second      go

1. Go ..... on.
2. .... past the traffic lights.
3. It's the building next to the library ..... the left.
4. .... the roundabout turn left.
5. Then ..... the first left on to Green Street.
6. Go ..... the traffic lights and take the ..... right on to King's Road.

<sup>37</sup> Tham khảo sách *The official Cambridge guide to IELTS*, trang 28