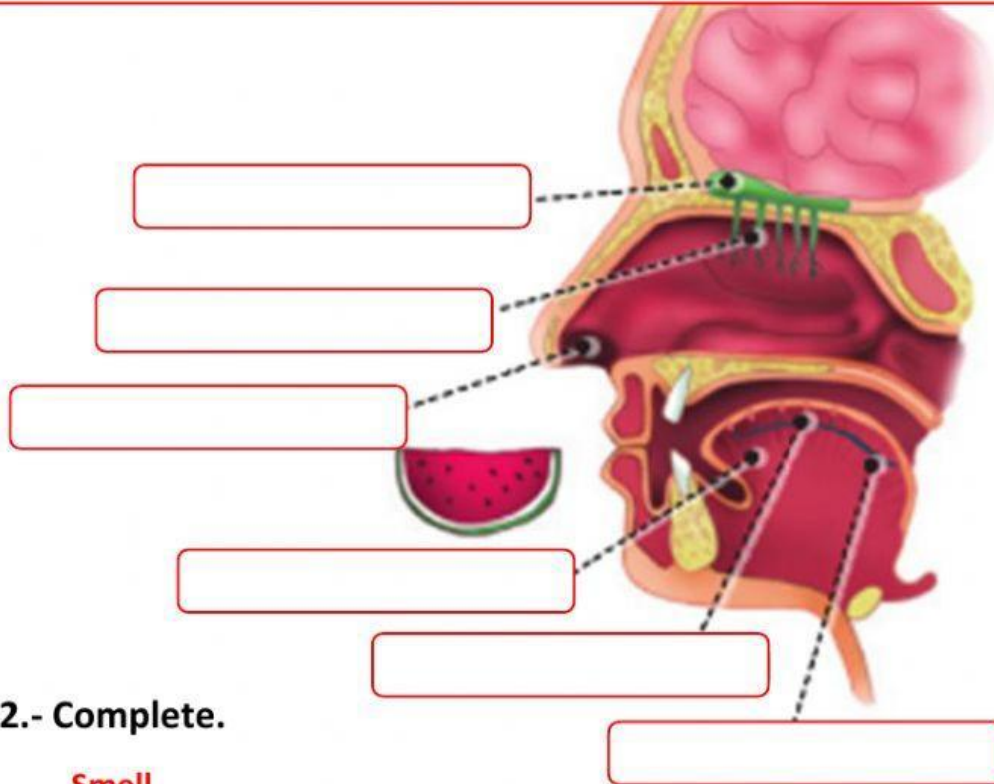


# THE FIVE SENSES: SMELL/TASTE



1.- Complete the picture using the words in the box.

OLFACTORY RECEPTORS	NERVE	NOSTRIL
TASTE BUD	TONGUE	OLFACTORY BULB



2.- Complete.

## Smell

- 1.- Odour particles enter our nose through our .
- 2.- The  within the nasal cavity detect the odour particles.
- 3.- The  send electrical signals to the  and from there to the brain.

## Taste

- 1.- Food touches the tongue, which has lots of .
- 2.-  in the taste buds can detect five tastes: sweet, salty, bitter, sour and umami.
- 3.-  send the taste information to the brain.