








Name: \_\_\_\_\_

Grade & Section : \_\_\_\_\_

**A. MUSIC :**

**I. DIRECTIONS : Write the correct answer in the blank.**

Note	Names	Beats
	1. _____	_____
	2. _____	_____
	3. _____	_____
	4. _____	_____
	5. _____	_____



6. \_\_\_\_\_

7. \_\_\_\_\_

8. The Highness and Lowness of sounds \_\_\_\_\_

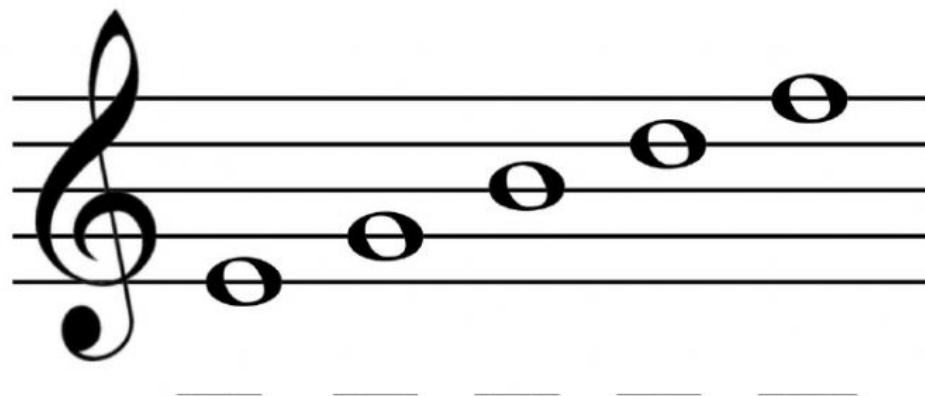
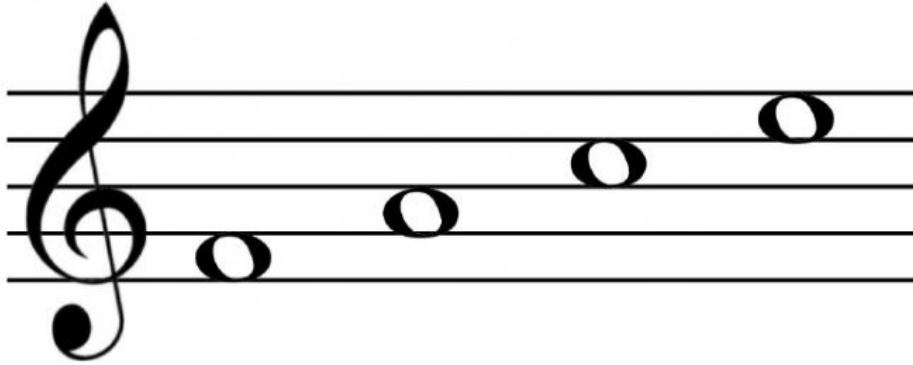
9. It identifies the pitch \_\_\_\_\_

10. It has letters in the lines and spaces on the staff \_\_\_\_\_

**WHERE FUN AND LEARNING NEVER ENDS**

"Train up a child in the way he should go, and when he was old he will not depart from it." Proverbs 22:6

**B. DIRECTIONS :** Write the letter in the lines and spaces in a musical staff.



**B.ARTS**

**DIRECTIONS :** Write in the blank if it is **PRIMARY** , **SECONDARY** , or **INTERMEDIATE** colors.

- |                        |                      |
|------------------------|----------------------|
| _____ 1. Yellow Orange | _____ 6. Yellow      |
| _____ 2. Violet        | _____ 7. Blue Violet |
| _____ 3. Red           | _____ 8. Blue Green  |
| _____ 4. Orange        | _____ 9. Green       |
| _____ 5. Blue          | _____ 10. Red Violet |

**WHERE FUN AND LEARNING NEVER ENDS**

"Train up a child in the way he should go, and when he was old he will not depart from it." Proverbs 22:6

### **C. HEALTH**

**DIRECTIONS : Identify the Common illnesses among Children. Write the answer in the line.**

- \_\_\_\_\_ 1. It cause painful swelling of the salivary glands.
- \_\_\_\_\_ 2. It characterized by a rise in the body temperature and a chilling Feeling.
- \_\_\_\_\_ 3. The patient experiences tightness of the chest and breathing Problems.
- \_\_\_\_\_ 4. It is itchy pockmarks develop in the skin.
- \_\_\_\_\_ 5. Skin rashes develop all over the body, and may result to internal Bleeding in its serious stage.

**B. Identify if the following illnesses may be due to the ENVIRONMENT , POOR LIFESTYLE , or HEREDITY. Write **E** , **PL** , or **H** in the blank.**

- \_\_\_\_\_ 6. Diabetes
- \_\_\_\_\_ 7. Mumps
- \_\_\_\_\_ 8. Dengue fever
- \_\_\_\_\_ 9. Heart disease
- \_\_\_\_\_ 10. Flu
- \_\_\_\_\_ 11. Measles
- \_\_\_\_\_ 12. Malnutrition
- \_\_\_\_\_ 13. Common cold
- \_\_\_\_\_ 14. Chicken pox
- \_\_\_\_\_ 15. Hypertension

### **WHERE FUN AND LEARNING NEVER ENDS**

"Train up a child in the way he should go, and when he was old he will not depart from it." Proverbs 22:6