

2 Match.

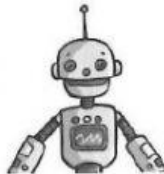
- | | |
|--------------|-------------|
| 1 I'm a | a dancer? |
| 2 He's an | b pirates. |
| 3 Is she a | c cowboy. |
| 4 Are they | d octopus? |
| 5 We're | e elephant. |
| 6 Are you an | f swans? |

3 Choose and write.

She isn't I'm It isn't You're They aren't ~~We're~~



1 We're brothers.



2 _____ a doll.



3 _____ a king.



4 _____ ducks.



5 _____ my grandpa.



6 _____ a spy.

4 Choose and write.

No, they aren't. No, he isn't. ~~Yes, she is.~~ Yes, they are. No, I'm not.

- 1 Is Sally a girl?
- 2 Are Karla and Patty friends?
- 3 Is Chatter a baby?
- 4 Are Trumpet and Tag small?
- 5 Are you a teacher?

Yes, she is.