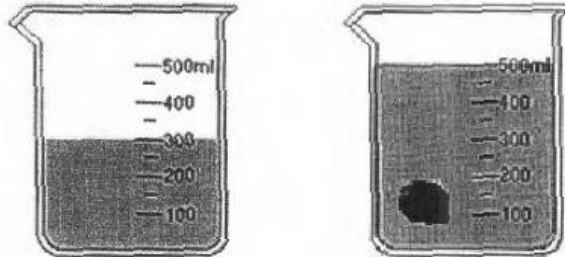


12. A beaker was filled with water and measured 300 ml. When a stone was lowered into the beaker, the water level rose to 500 ml. Why does the water level change?



- (a) The stone is too heavy.  
 (b) The stone is less dense than the water.  
 (c) The stone has taken space in the water.  
 (d) The stone has taken the shape of its container.
13. If a disease wipes out all the species of a primary consumer from a food web, how would this **MOST LIKELY** affect the balance of the ecosystem?
- (a) the consumer of this species would all die.  
 (b) the producers of this ecosystem would decrease.  
 (c) the organisms that eat this species would increase.  
 (d) the decomposers in this ecosystem would increase.
14. James is standing near a wall. What caused James' shadow to form on the wall?



CONTINUE WORKING

- (a) All the light sources were removed.
- (b) An object got in the way of the light.
- (c) James got in the way of the light source.
- (d) Another person got in the way of the light source.

15. Martin fell off his bicycle and fractured one of his leg bones. Which one of the following lists of foods is **BEST** for Martin to consume more of, to strengthen his bones?

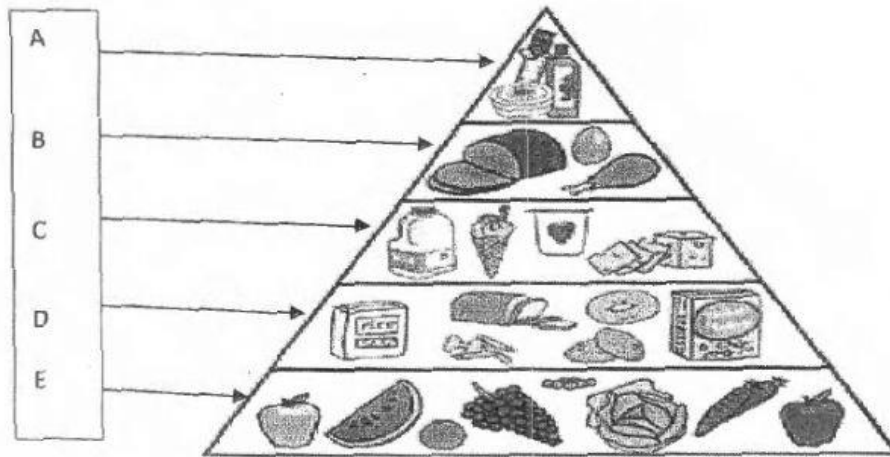
- |                                |                                 |
|--------------------------------|---------------------------------|
| (a) salad, lentils, rice       | (b) orange juice, milk, cheese  |
| (c) milk, ripe bananas, coffee | (d) ham, fry chicken, stew beef |

**PART C****HEALTH & FAMILY LIFE**

**DIRECTIONS:** Read each question carefully and select the **BEST** answer.  
**Shade** the letter of the answer you have chosen on your  
**Answer Sheet**.

1. Paul loves himself. He thinks positively in all matters related to himself, and has confidence in his abilities. Which of the following statements **BEST** describes Paul?
  - (a) He is very trustworthy.
  - (b) He has a high level of self-esteem.
  - (c) He shows great respect for himself.
  - (d) He is able to control his thoughts and actions.
  
2. After the Christmas Eve Trough, Jane was left without electricity for two weeks. She had twenty pounds of beef in her refrigerator. She chose to spread salt on the meat and put it to dry. Why do you think Jane spread salt on the meat and put it in the sun to dry?
  - (a) to make the meat tasty
  - (b) to package it safely in the bucket
  - (c) to prevent the meat from spoiling
  - (d) to remove the blood from the meat
  
3. All of the following can contribute to health problems **EXCEPT**:
  - (a) burning the garbage to get rid of it.
  - (b) creating garbage piles by the roadside.
  - (c) disposing stale food in the drains or gutters.
  - (d) keeping water receptacles properly covered.

Study the diagram below to answer Question 4.



4. Which of the following statements is **NOT** true about the above diagram?

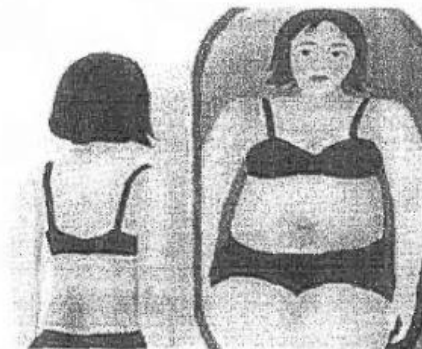
- (a) The main nutrient in the food group matched to D is vitamins.
- (b) The main nutrient in the food group matched to B is proteins.
- (c) It guides us that our diet should contain foods from each food group.
- (d) It guides us on the amount that should be eaten from each food group.

5. It is common for both boys and girls to begin growing pubic hair. They grow pubic hair for all of the following reasons **EXCEPT**:

- (a) They are experiencing puberty.
- (b) They are becoming adolescents.
- (c) They are experiencing a hormonal surge.
- (d) Their bodies are becoming more attractive to others.

6. Which of the following scenarios represents a child with good personal characteristics?
- (a) Mark helps mom to care for the baby. He is a good listener. He is pressured by his friends.
  - (b) Jack listens to the news every day. He obeys his parents. He does not help in doing his chores.
  - (c) Paul helps to care for the baby. He reads every day. He asks for permission to visit the neighbour.
  - (d) Sarah listens to the news daily. She greets everyone and is an avid reader. When her mom calls her, she seldom responds.

Study the picture of Gina below and answer Question 7.



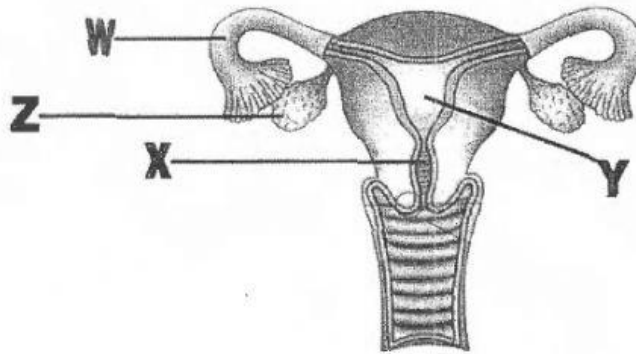
7. In the picture **above**, Gina is looking at herself in the mirror and thinks that she is fat. She is only 120 lbs, and is unhappy about her size. She goes on a slimming diet and experiences drastic weight loss. Which of the following diseases is Gina **MOST LIKELY** suffering from?

- (a) bulimia                      (b) obesity                      (c) anorexia                      (d) marasmus

8. Mable and Thomas are having an argument over who should wash the dishes after dinner. Mable screams because she feels stressed. One positive way of handling her stress is to \_\_\_\_\_.

- (a) smoke  
(b) exercise  
(c) drink alcohol  
(d) eat lots of junk food

Use the diagram below to answer Question 9.



9. Fertilization takes place in the part labelled \_\_\_\_\_.

- (a) Part Z - Ovary  
(b) Part X - Cervix  
(c) Part Y - Uterus  
(d) Part W - Fallopian Tube

10. Tom is overweight. He has maintained a blood pressure reading above 140/90 mm HG. During a visit to the doctor, he received a high blood sugar and blood pressure reading. Which of the two conditions is Tom **MOST LIKELY** suffering from?

- (a) arthritis and diabetes  
(b) cancer and bulimia  
(c) hypertension and diabetes  
(d) glaucoma and atherosclerosis