

# Where Is the Ghost?



above



below

The ghost is \_\_\_\_\_ the house.



 in  
 under

The ghost is \_\_\_\_\_ the cauldron.



 on  
 between

The ghost is     the pumpkin.



 between  
 below

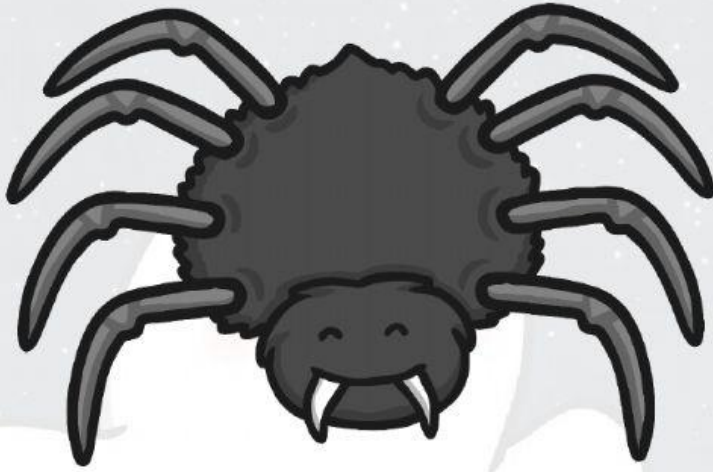
The ghost is \_\_\_\_\_ the witch.



next to



in front of



The ghost is \_\_\_\_\_ the spider.

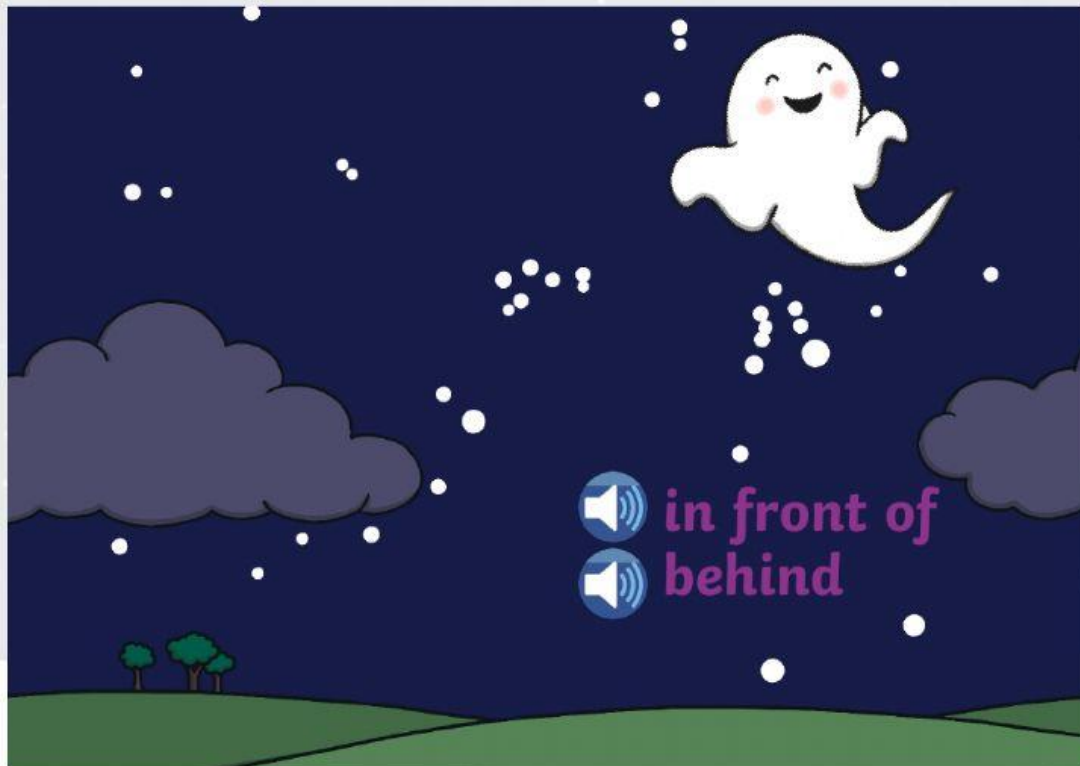


LIVEWORKSHEETS





The ghost is \_\_\_\_\_ the tree.



in front of  
behind

The ghost is \_\_\_\_\_ the moon.



between



behind



The ghost is \_\_\_\_\_ the bats.



LIVEWORKSHEETS