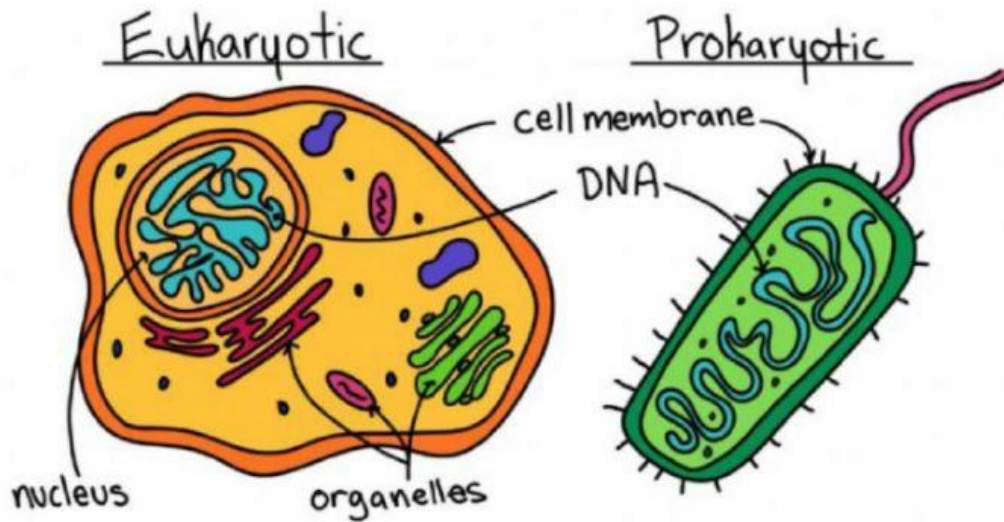


## Types of Cells

All living things are made of cells; cells are the simplest units of life and work together to create more complex organisms like animals and plants. Cells are classified based on their complexity.

1. Choose the correct definition for each type of cell.



**Eukaryotic Definition:**

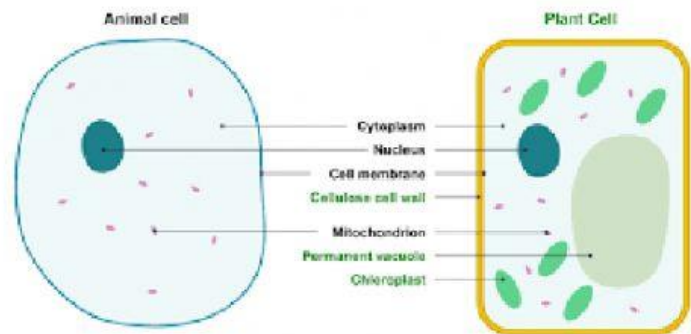
**Prokaryotic Definition**

2. Compare the differences between prokaryotic and eukaryotic cells.

Eukaryotic Cells	Prokaryotic Cells
Nucleus	_____
_____ organelles	_____ organelles
_____ DNA	_____ DNA
All other cells	_____

3. Based on the picture to the right, which organelles are in a plant cell but **NOT** in an animal cell?

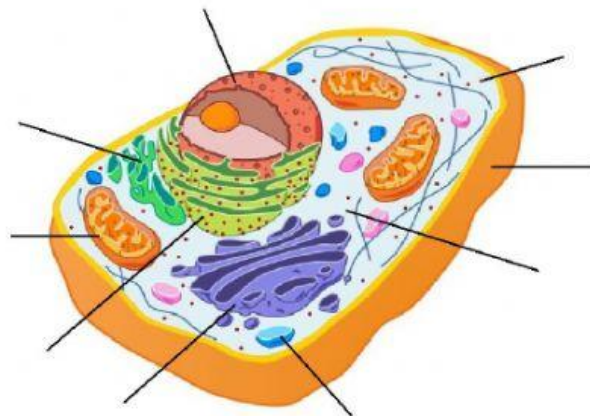
\_\_\_\_\_



4. Label the cells by writing "Plant" or "Animal." Then match the organelle names to the structures.

\_\_\_\_\_ Cell

Word Bank	
Cytoplasm	Golgi Body
Rough ER	Mitochondria
Smooth ER	Nucleus
Cell Membrane	Lysosome
Ribosome	



\_\_\_\_\_ Cell

Word Bank	
Cytoplasm	Golgi Body
Rough ER	Mitochondria
Smooth ER	Nucleus
Cell Membrane	Vacuole
Ribosome	Chloroplast
Cell Wall	

