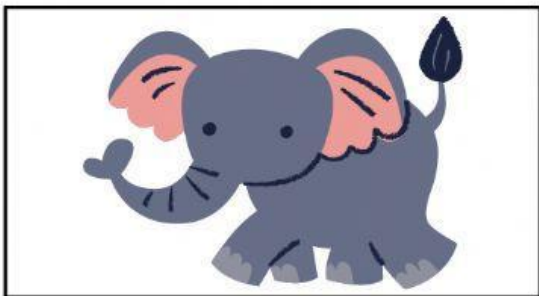


## EXERCISE I

Solve the animal's riddles.



This is something black and white. But it's not an old TV. It's a type of animal that starts with the letter Z.



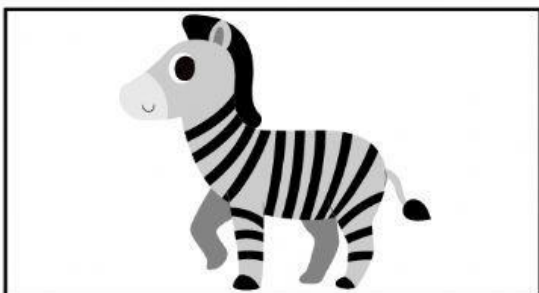
I have a tail, and I am a good tree climber. I can mimic you very easily. My favorite food is bananas.



I am the largest animal with a huge trunk.



I'm incredibly tall. The height of my legs, usually around 6 feet, is taller than most humans.



I am called the king of the jungle and it's hard to tame me.