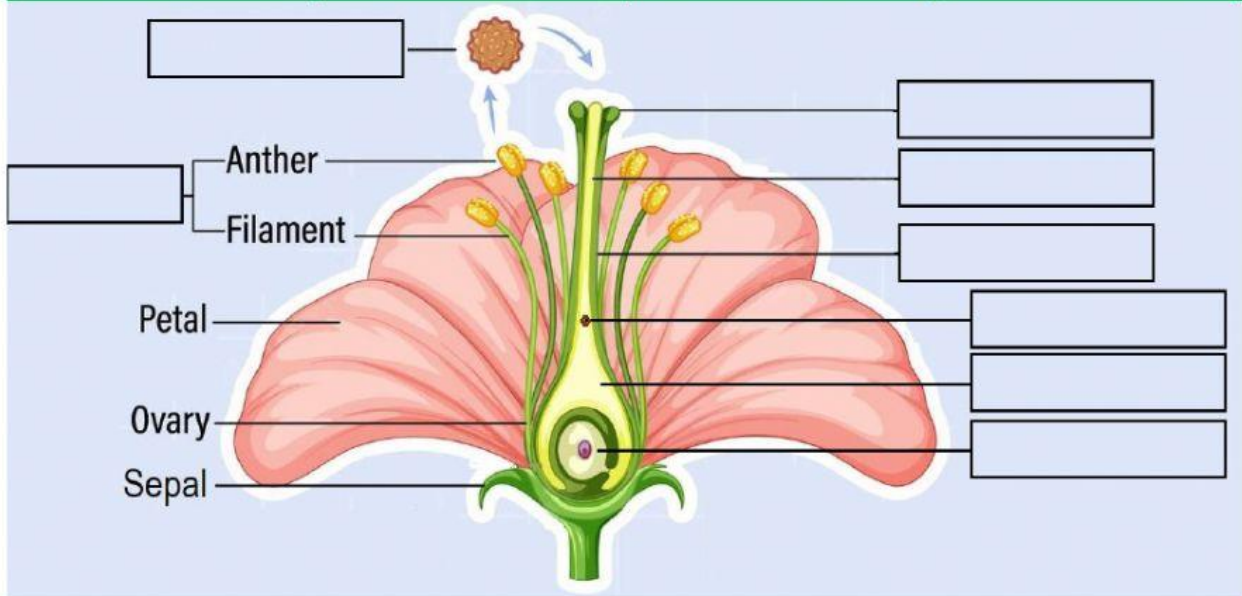


# Fertilisation

Complete the diagram with the correct labels in the box below:

Ovary	Pollen Grain	Style	Male Cell
Pollen Tube	Stamen	Ovule	Stigma



Complete the diagram with the correct labels in the box below:

After pollination, **fertilisation** is the next step in the process of reproduction. It happens like this:

1. A pollen grain lands on the \_\_\_\_\_
2. The pollen grain (male cell) grows a \_\_\_\_\_
3. It grows down the centre of the **style** towards the \_\_\_\_\_
4. The pollen grain (male cell) \_\_\_\_\_ with the \_\_\_\_\_ (female cell)
5. The joining is called \_\_\_\_\_.
6. The ovary develops into a \_\_\_\_\_
7. The fruit develops \_\_\_\_\_