

Unit 05

Part 1: Photos of more than 2 people Part 3: Office Equipment

PART 1: PHOTOS OF MORE THAN TWO PEOPLE

● Basic Information

Note:

1. _____
 2. _____
 3. _____
 4. _____
- _____

● Strategy

Language development

Words	Meanings	Words	Meanings

HOMEWORK

► Exercise 1. Listen and fill in the blanks, then, choose the correct answer (File 1).

1.



- A. The doors of the train are closed
- B. The train is into the station
- C. The training conductor is the passengers
- D. The passengers are the train

2.



- A. The people are get food
- B. The tables have been in row
- C. The dinners are on picnic tables
- D. A concert is just beginning

3.



- A. They're a slide show
- B. The men are allat each other
- C. Two of the men are at the chart
- D. The men at a blueprint

4.



- A. The beach is closed to the public
- B. The waves are.....on the shore
- C. The boat is on the sea
- D. The people are along the beach

5.



- A. They're the staircase
- B. They're the airplane
- C. They're
- D. They're in the plane

6.



- A. The people are
- B. A customer is
- C. A woman is onto the counter
- D. A man is his apron

7.



- A. They are business cards
- B. All of the women
- C. They are at a round table.
- D. Some of the people

.....

8.



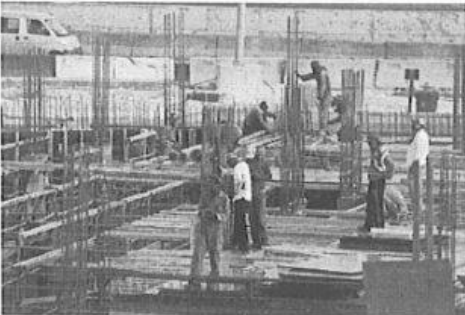
- A. Several clouds are moving in.
- B. A
- C. Some of the people
.....
- D. The flowers in a row.

9.



- A. Some
- B. People the same direction.
- C. All pickets
- D. One man his luggage.

10.



- A. One of the man.....
- B. All
- C. They
- D. The entire building with vinyl layers

11.



- A. A crew is on the rooftop.
- B. There is a crane full of materials.
- C. One of the men is a brick.
- D. They

12.



- A. The man is
- B. The man is the cart
- C. The man is the products
- D. The man is on the shelves.

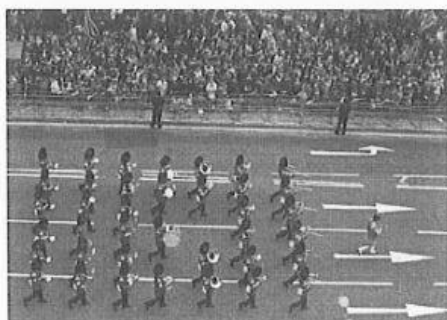
► Exercise 2. Listen and fill in the blanks, then, choose the correct answer (File 2).

1.



- A. He is
- B. He is
- C. He is
- D. He is

2.



- A. People are
- B. The band isin lines
- C. People are their instruments
- D. Some people are

3.



- A. The picture is hanging on the wall
- B. People are
- C. People are workshop
- D. One of the men is the counter

4.



- A. One woman is into the bottle
- B. One of the women is
- C. The women are
- D. toward the building entrance

► Exercise 3. Listen and choose the correct answer (File 3).

1.



2.



3.



4.



► Exercise 4. Listen and choose the correct answer (File 4).

44. According to the woman, what has caused a distraction?

- (A) Excessive heat
- (B) Building construction
- (C) Untidy offices
- (D) Noisy appliances

45. What does the woman ask the man to do?

- (A) Replace some equipment
- (B) Send a technician
- (C) Clean an office space
- (D) Change an appointment date

46. What is probably going to take place on Friday?

- (A) A company outing
- (B) A retirement party
- (C) A technical seminar
- (D) A grand opening

47. What is the woman's problem?

- (A) She cannot find a survey form.
- (B) She forgot to place an order.
- (C) She cannot print some documents.
- (D) She lost a stapler.

48. Where is the man going this afternoon?

- (A) To a copy center
- (B) To a supply shop
- (C) To a lunch meeting
- (D) To a storage facility

49. What will the woman most likely send the man?

- (A) A link to a Web site
- (B) A billing statement
- (C) A product number
- (D) A list of necessities

50. What is the problem?

- (A) A purchase was not approved.
- (B) A delivery will arrive late.
- (C) A device is malfunctioning.
- (D) A proposal was rejected.

51. What is scheduled to happen in the afternoon?

- (A) An employee orientation
- (B) An executive meeting

- (C) A technology seminar
- (D) A product demonstration

52. What does the man imply about the IT department?

- (A) It will hire additional staff.
- (B) It is not currently busy.
- (C) It moved to a new office.
- (D) It has a new department head

56. What is the man's problem?

- (A) A technician has not yet arrived.
- (B) He has not received an order.
- (C) He needs additional supplies.
- (D) A warehouse is too hot.

57. What will happen tomorrow?

- (A) A renovation will be completed.
- (B) A company will release a product.
- (C) A delivery will arrive at a storage facility.
- (D) A repairperson will come to the building.

58. What will the man most likely do?

- (A) Arrive early at a location
- (B) Use fans in a workplace
- (C) Call a shipping company
- (D) Purchase some equipment