

Name: \_\_\_\_\_ Block: \_\_\_\_\_

## CHEMISTRY

### Accuracy and Precision

Look carefully at the measurements. Decide if the measurements are Accurate only, Precise only, Both accurate and precise, or Neither. Use only the letters as answers. Type the letters on the line next to the question number.

Accurate only: **A**      Precise only: **P**      Both: **B**      Neither: **N**

Mr. Jones got a python. He brought it to school to show his students. The python was very long. Five classmates measured the length of a python with a flexible tape measure. The true length (true value) of the python was **500 cm**. The classmates collected and shared the following measurements shown to the right.

Measured length of the Python (cm)					
<b>Kayla</b>	472	480	474	475	471
<b>Tyrone</b>	292	356	310	400	377
<b>Ralph</b>	498	501	500	502	504
<b>Mark</b>	537	541	538	538	540
<b>Lena</b>	516	506	488	504	491

\_\_\_\_\_ 1 Kayla

\_\_\_\_\_ 4 Mark

\_\_\_\_\_ 2 Tyrone

\_\_\_\_\_ 5 Lena

\_\_\_\_\_ 3 Ralph

Look carefully at the measurements. Decide if the measurements are Accurate only, Precise only, Both accurate and precise, or Neither. Use only the letters as answers. Type the answer on the line next to the question number.

Accurate only: **A**      Precise only: **P**      Both: **B**      Neither: **N**

	True value	Measurements
_____ 6	45	37, 40, 39, 45, 49, 41
_____ 7	250	244, 249, 251, 248, 252
_____ 8	30	25, 28, 33, 35, 31, 26
_____ 9	150	187, 165, 134, 177, 142

	True value	Measurements
_____ 10	50	55, 57, 58, 55, 57, 56
_____ 11	50	39, 21, 25, 33, 34, 26
_____ 12	50	56, 51, 54, 45, 43, 54
_____ 13	50	51, 53, 50, 51, 50, 49
_____ 14	300	221, 289, 277, 256, 265, 240

Look carefully at the graphs. Decide if the measurements are Accurate only, Precise only, Both accurate and precise, or Neither. Use only the letters as answers. Type the answer on the line next to the graph.

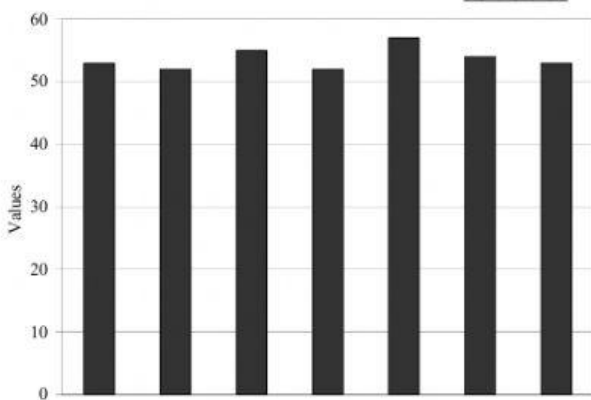
Accurate only: **A**

Precise only: **P**

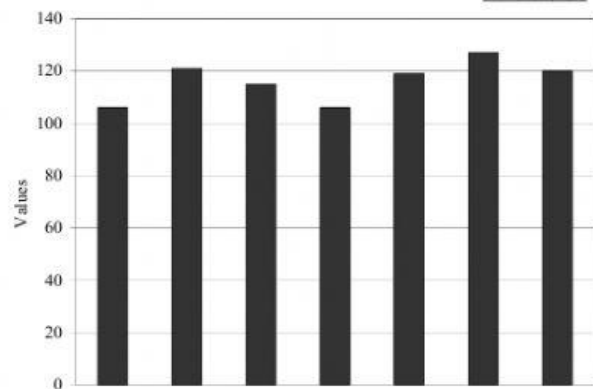
Both: **B**

Neither: **N**

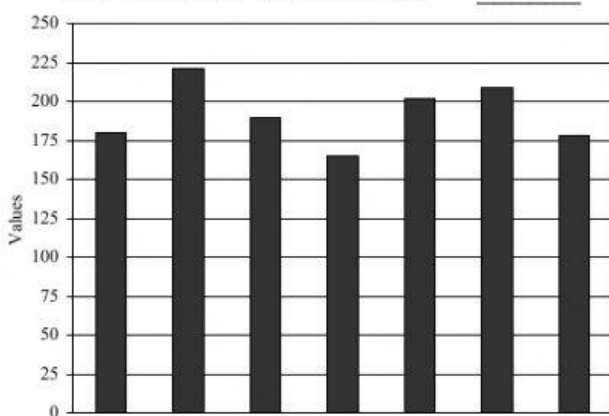
15. The true value is 45. \_\_\_\_\_



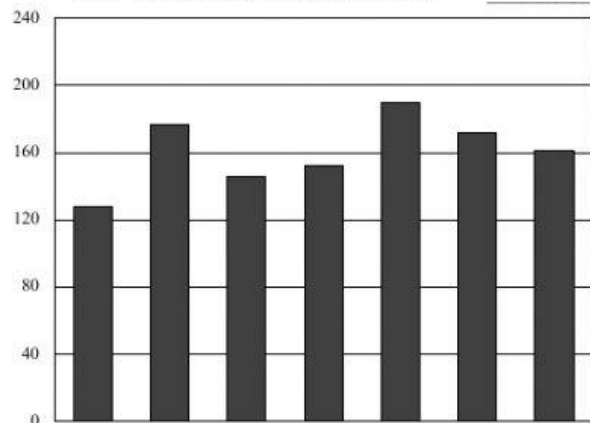
16. The true value is 115. \_\_\_\_\_



17. The true value is 150. \_\_\_\_\_



18. The true value is 200. \_\_\_\_\_



The brown circles are measurements collected during an experiment. The vertical line represents the true answer or true value. Decide if the measurements are Accurate only, Precise only, Both accurate and precise, or Neither. Use only the letters as answers. Type the answer on the line next to the graph.

Accurate only: **A**      Precise only: **P**      Both: **B**      Neither: **N**

