

PART C



Instruction: Write the answers in the spaces provided.

5.1 Sources and Various Forms of Energy

I Diagram I shows the situation in a house.

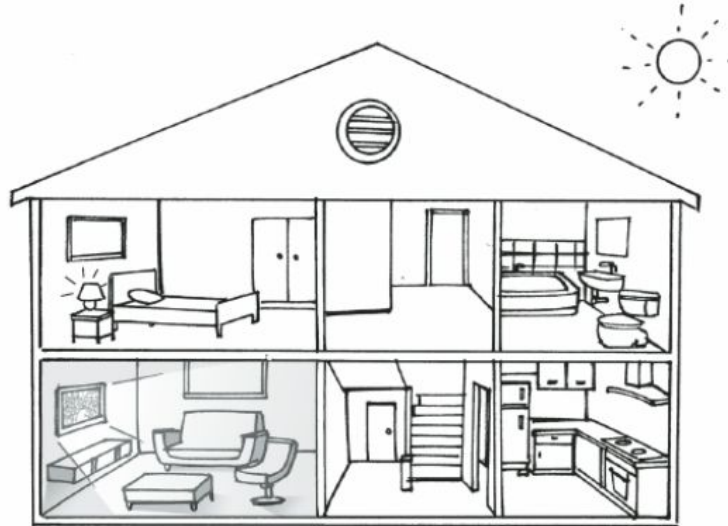
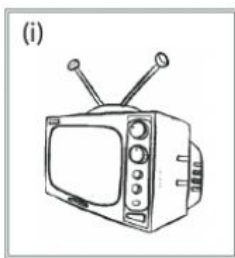


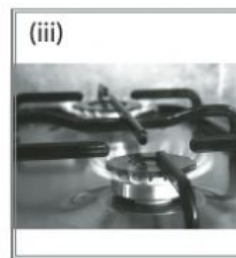
Diagram I

(a) List **four** forms of energy that are shown in Diagram I.

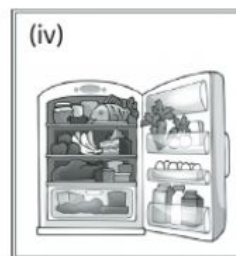
(2 marks)

(b) State the transformation of energy for the electrical appliances shown in Diagram I.









(4 marks)

2 Diagrams 2.1 and 2.2 show two electrical appliances.

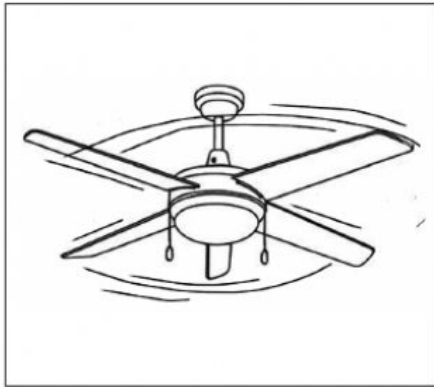


Diagram 2.1

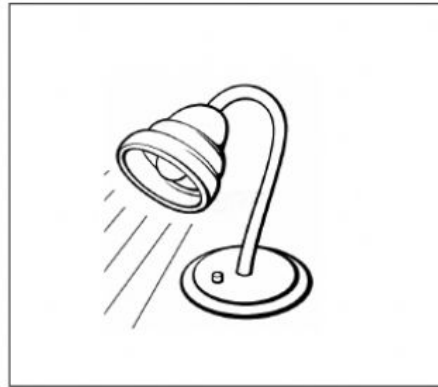


Diagram 2.2

State the forms of energy generated by the electrical appliances in Diagrams 2.1 and 2.2.

(i)	Diagram 2.1	} Forms of energy generated	<div style="display: inline-block; width: 100px; height: 100px; border: 1px solid black; transform: rotate(45deg);"></div> <div style="display: inline-block; width: 100px; height: 100px; border: 1px solid black; transform: rotate(-45deg);"></div> <div style="display: inline-block; width: 300px; height: 20px; border-bottom: 1px solid black; margin-top: 10px;"></div> <div style="display: inline-block; width: 300px; height: 20px; border-bottom: 1px solid black; margin-top: 10px;"></div>
(ii)	Diagram 2.2		

(2 marks)

3 Diagram 3 shows Ikmal is using some electrical appliances while studying.



Diagram 3

(a) In your opinion, is Ikmal's action sensible?

☐ Yes

☐ No

(b) Give your reason.

HOTS

(2 marks)