

Grade-3-Lesson-4-Animal Traits

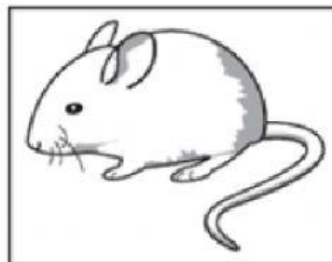
Choose the correct answers:

1. How can you tell if an adult animal and a baby animal are parent and offspring?
 - A. They look similar.
 - B. They are the same size.
 - C. They are different colors.
2. Who do children inherit traits from?
 - A. mother only
 - B. father only
 - C. both parents
 - D. neither parent
3. How a person looks, and acts are his _____.
 - A. Traits
 - B. Body parts
 - C. Color
4. Which is not an inherited trait?
 - A. color of fur
 - B. height
 - C. speaking a language
 - D. eye color
5. A group of kittens have the same parents. What is one way that the kittens can be different from each other and their parents?



- A. They can have different kinds of ears.
- B. They will not eat the same kind of food.
- C. They can be different colors.

6. Heredity is the passing on of traits from an organism's _____.
 Parents
 Kids
 Neighbor
7. In many ways, young animals are a lot like _____.
 their mother
 both their mother and their father
 their father
8. The color of your eyes, skin, and hair are examples of _____ traits.
 A. Inherited
 B. Acquired
 C. Which is an example of a learned trait?
 D. roller-skating hair color eye color plant shape
9. Which of these is an inherited trait? Select **all** that apply.
 A. feather color
 B. height
 C. playing piano
 D. eye color
10. Why baby rabbits look different from each other?
 A. They inherited their traits from one parent.
 B. They inherited different traits from each other.
 C. They inherited the same traits from each parent.
 D. They inherited different traits from their parents.
11. Learned and inherited traits help animals _____.
 A. Hunt
 B. Survive
 C. Hide
 D. Camouflage
12. A nocturnal animal _____.
 A. only lives in deserts
 B. moves constantly
 C. sleeps at night
 D. hunts for food at night



13. Look at the pictures of the two different foxes.



Which variation in traits makes animal **A** more likely to survive an Arctic winter than animal **B**?

- A. fur color
- B. fur length
- C. ear shape
- D. small size