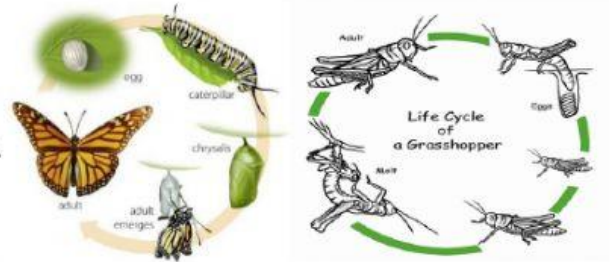


Module-2 Animal—Life Cycle

Name-----

1. Which is **not** an example of a salamander's life cycle?
 - A. egg hatches
 - B. loses its gills and grows lungs
 - C. returns to the water to lay eggs
 - D. has live babies
2. Compare the butterfly life cycle to the grasshopper life cycle? How are they the same?

- a. Both animals fly.
- b. Both animals start out as eggs.
- c. Both animals hang from tree branches.
- B. Both animals hop.



3. After a fish egg hatches, it_____ .
 - A. goes through a metamorphosis
 - B. looks like a small version of its parents

4. Which animal has a life cycle most like a chicken's life cycle?

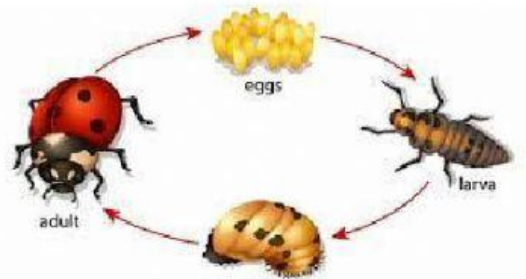
- A. Dog
- B. Bear
- C. horse
- D. turtle



5. When does a life cycle end?
 - A. never
 - B. when the organism dies
 - C. when the organism reproduces
 - D. when the organism grows

6. Which is the second stage in a ladybug's life cycle?

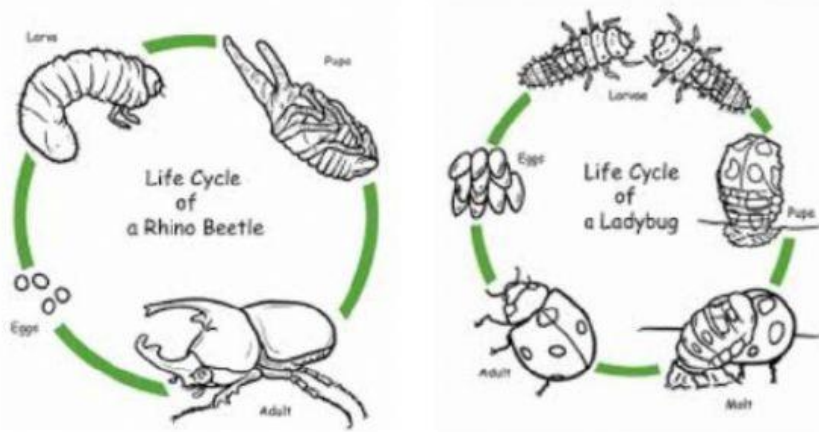
- A. Adult
- B. egg
- C. larva
- D. pupa



7. An animal that goes through metamorphosis starts life as an_____.

- A. baby
- B. egg
- C. adult

8. Compare the rhino beetle and ladybug life cycle. How are they different?



- A. The ladybug and rhino beetle both start as eggs.
- B. The ladybug has a molt stage, and the rhino beetle does not.
- C. The rhino beetle and the ladybug both go through a larva stage.
- D. The rhino beetle eats leaves and the ladybug does not.

9. How does a frog start its life?

- A. as a tadpole
- B. as a larva
- C. as an adult
- D. as an egg

10. Which animals do not undergo metamorphosis during its life cycle? Select **all** that apply.

- A. Cat
- B. frog
- C. snake
- D. beetle

11. When an insect hatches from an egg it is called-----.

- A. Larva
- B. Pupa
- C. Baby
- D. Seed



12. After _____ hatches, it usually goes through a metamorphosis.
- A. a fish
 - B. a reptile
 - C. an insect
13. Which statement best describes metamorphosis?
- A. Eggs hatch.
 - B. Body forms change.
 - C. Animals die.
 - D. Animals feed young.
14. An animal that goes through a metamorphosis changes _____ as it grows.
- A. species
 - B. shape
15. Different types of animals have different life cycles. Animal life cycles can be predicted and compared because they follow a _____.
- A. Pattern
 - B. Patterns
16. Which animal does not hatch from an egg?
- A. Owl
 - B. Firefly
 - C. Ladybug
 - D. Bear