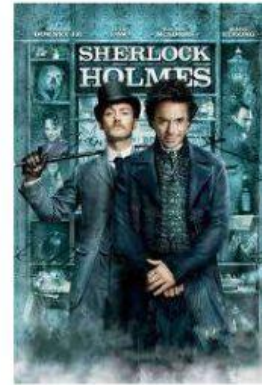


## PART 2

# SHERLOCK HOLMES



### 1. Match the words with their meaning.

- |             |       |                         |
|-------------|-------|-------------------------|
| a) Corpse   | _____ | 1. Verrugas.            |
| b) Complain | _____ | 2. Maldición / maldecir |
| c) Bail     | _____ | 3. Fianza.              |
| d) Neat     | _____ | 4. Quejarse.            |
| e) Curse    | _____ | 5. Limpio/pulcro.       |
| f) Warts    | _____ | 6. Cadáver.             |

### 2. Choose the correct option.

#### 1. When Sherlock chases Irene he is wearing...

- a) a fake nose.
- b) a wig.
- c) a fake moustache.

#### 2. Who pronounced Lord Blackwood dead?

- a) The police.
- b) Holmes.
- c) Watson.

#### 3. What part of the body is missing in the corpse they found in Lord Blackwood's coffin?

- a) Some teeth.
- b) His eyes.
- c) His tongue.

#### 4. The fortune-teller tells Watson that in the future Mary ...

- a) Will be rich.
- b) Will have twin daughters.
- c) Will have beard and warts.

#### 5. When Holmes and Watson are surprised by three men in the lab, what is one of them eating?

- a) A toffee apple.
- b) A sandwich.
- c) A toffee watermelon.

#### 6. After the incident with the boat, Watson and Holmes end up...

- a) at Holme's house.
- b) in jail.
- c) In the Grand Hotel.

#### 7. Who pays Watson's bail?

- a) Sherlock.
- b) Mary.
- c) Irene.

#### 8. How does Irene make Holmes sleep?

- a) With anaesthetic in the wine.
- b) With anaesthetic in the coffee.
- c) She hits him on his head.

#### 9. Where did Lord Blackwood kill his father?

- a) In the kitchen with a knife.
- b) In the bath with a pistol.
- c) In the bath with some kind of poison.