

Name: Class: Date:

REVISION

1. Equality or Inequality? Fill in the blanks.

- | | |
|--|---|
| a. $200\text{ml} + 700\text{ml}$ _____ 1litre | b. $137 < \text{_____} < 220$ |
| c. $35 + 24$ _____ $50 + 10$ | d. $25 + 43 < \text{_____} < 40 + 60$ |
| e. $74 + 26$ _____ $11 + 89$ | f. $200\text{g} + 800\text{g}$ _____ 1kg |
| g. 780kg _____ $900\text{kg} - 200\text{kg}$ | h. $857 < \text{_____}$ |

2. Complete these inequalities.

- | | |
|-------------------------|---------------------------|
| 1. _____ > 550 | 4. _____ > 56 |
| 2. $120 < \text{_____}$ | 5. _____ $> \text{_____}$ |
| 3. _____ < 312 | 6. _____ $< \text{_____}$ |

3. Solve the word problems.

- a. There are 32 oranges in a box. The shop has 10 boxes.
How many oranges does the shop have?
Answer: _____.
- b. There are eight birds standing on a wall. How many legs are there?
Answer: _____.
- c. A teacher wants to buy 45 notebooks for his students.
There are 5 notebooks in a packs. How many packs does he need to buy?
Answer: _____.

b.

327	79	236	64	142
-----	----	-----	----	-----

smallest

greatest

c.

679	475	621	38	563
-----	-----	-----	----	-----

smallest

greatest

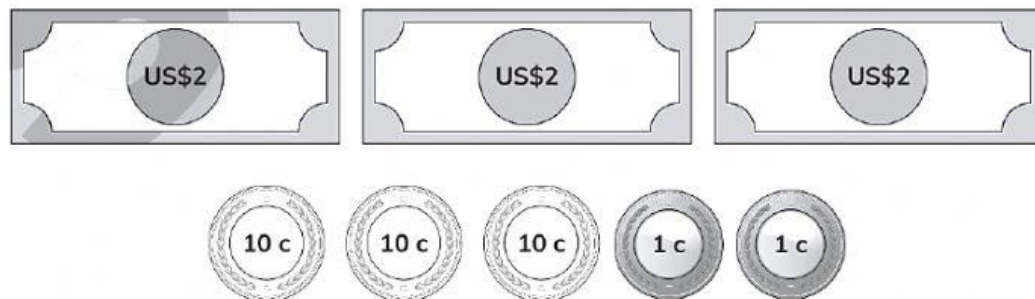
6. How much is it?

a.



Answer: _____

b.












Answer: _____

c.



Answer: _____

7. Match these statements to the correct time.

I eat my lunch at 12.45 pm	
I get up at 7.35 am	
I go to bed at half past eight in the evening	
I have a meal with my family at quarter to six in the evening	
School finishes at 2.35 in the afternoon	
School starts at 8.45 am	
I start my homework at 4.50 in the afternoon	
I play with my friends at quarter past 5 in the afternoon	
I walk to school with my friends at 7.45 am	
I play football at half past three in the afternoon	