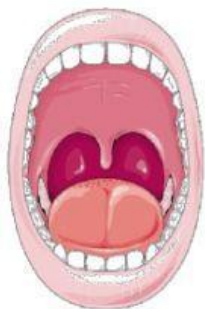


# The Digestive System

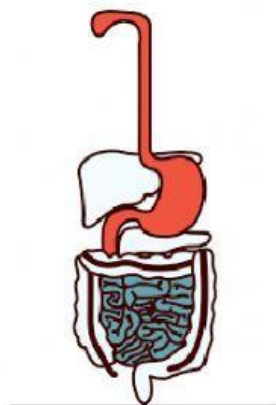


Animals need food for energy and growth. To use the food they eat, they must change it into a form that the body can use. This process is called digestion. The different organs, or body parts, that are involved in this process make up the digestive system.

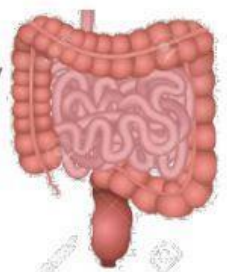
In humans the different parts of the digestive system make up what is called the digestive tract. The digestive tract begins with the mouth and ends at the anus. The main organs of the digestive system are the mouth, the esophagus, the stomach, and the small and large intestines.



Digestion begins in the **mouth**, where the **teeth** chew the food. Salivary glands in the mouth produce a digestive juice called saliva. The tongue mixes the food particles with the saliva. The saliva moistens and softens the food so that it can be swallowed easily. When a person swallows' food it passes into the **esophagus**. The



esophagus is a tube through which food passes from the mouth to the stomach. In the walls of the **Stomach**, millions of gastric glands produce gastric juices. The juices break down food particles. The stomach churns the food into a thick liquid called chyme. From the stomach, the chyme is sent into the **small intestine**. The small intestine is 22 to 25 feet long. It is the longest part of the digestive system. Food remains in the small intestine for several hours to break down most of the remains of the food into simple chemicals. These chemicals enter the bloodstream through the walls of the small intestine. The blood carries the chemicals to the body's cells. The body then uses those chemicals as fuel for energy and growth. The substances that are left pass from the small intestine into the **large intestine**. The large intestine absorbs water to get them back to our body and the remaining wastes will go outside our body through anus.



Solve the following questions:

**I- Define digestion.**

---

**II- Name the parts of the digestive system.**

---

**III-Where does the digestion starts? Ends?**

---

**IV-Pick out from the article 2 digestive glands. What does each one secretes?**

---

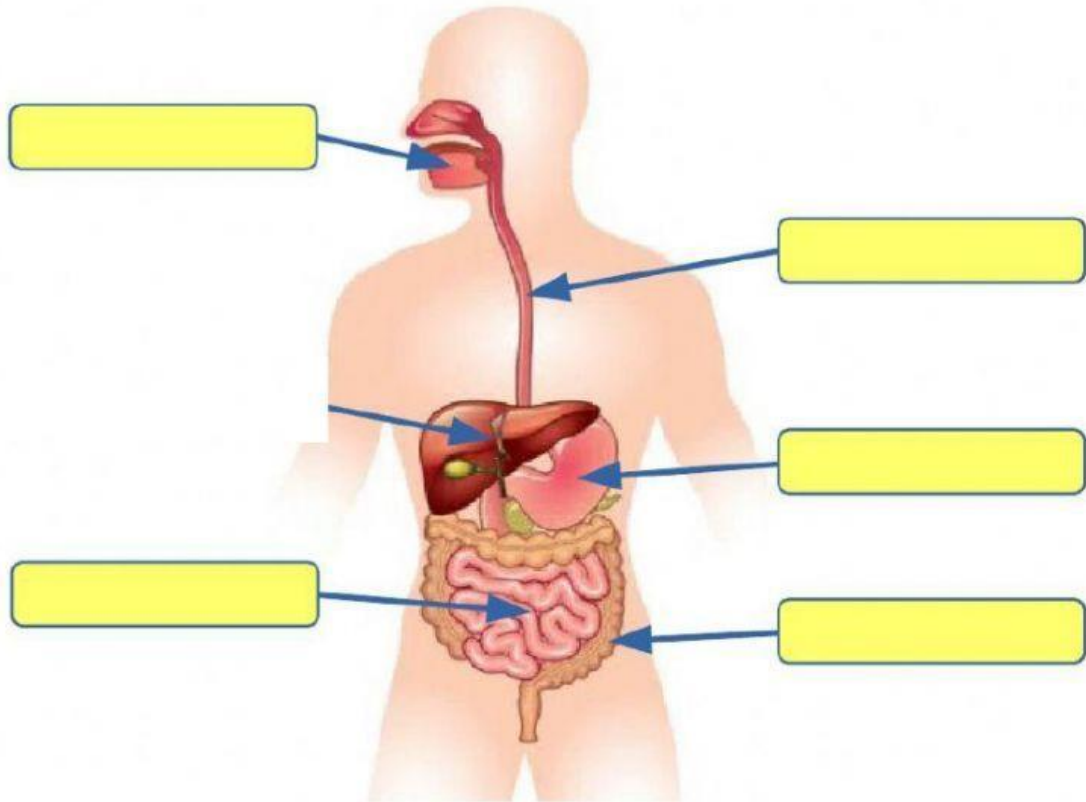
---

**V- Fill in the blanks using the words inside the box:**

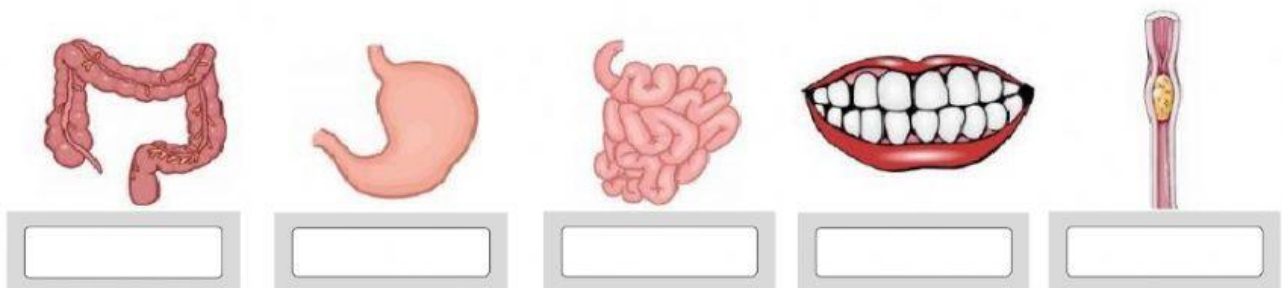
Saliva	Stomach	Esophagus
Gastric glands	Mouth	Small intestine
Anus	Large intestine	

The digestions start with \_\_\_\_\_. It contains salivary glands that secretes \_\_\_\_\_ to soften the food we eat. The food will than pass into a long tube called \_\_\_\_\_ which will link the mouth to the \_\_\_\_\_. After that the stomach will digest the food with the help of \_\_\_\_\_ that secretes gastric juices. The remaining of the food will pass then to the longest part of the digestive system which is \_\_\_\_\_ then into the \_\_\_\_\_ which will absorb the water and finally release the wastes through the \_\_\_\_\_.

**VI- Label the organs of the digestive system. Choose the correct option.**



**VII- Write the name of these organs**



### VIII- Write the name of these organs

small intestine

teeth

stomach

esophagus

large intestine

	They chew the food.
	It connects the mouth to the stomach.
	It absorbs water and eliminates faeces.
	It mixes food with special liquids and the digestion starts.
	It is a long tube. It absorbs nutrients.

### IX- Number to order the process of digestion.

- The food goes down the **esophagus** and enters the stomach.
- **Finally**, in the **large intestine** water is absorbed. Faeces are eliminated from our body.
- In the **stomach** the digestion starts.
- **Next**, the food goes into the **small intestine**. Here nutrients are absorbed.
- **First**, we chew the food in the **mouth** with our teeth.

