

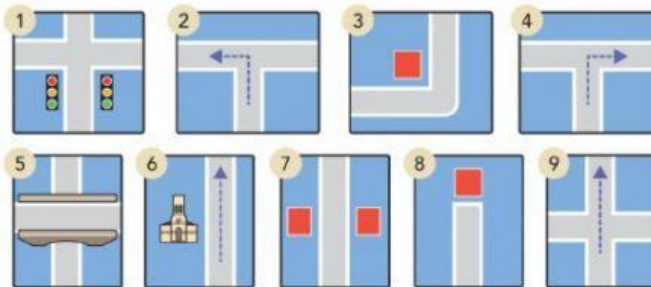
1. Watch the video where Rob and Jenny are planning their free morning and complete the sentences.

1. Rob suggests that they go \_\_\_\_\_.
2. He says that they can \_\_\_\_\_ bikes.
3. \_\_\_\_\_ phones \_\_\_\_\_.
4. Rob needs to interview an \_\_\_\_\_.
5. Rob asks if he can do the interview on \_\_\_\_\_.
6. Rob and Jenny arrange to meet at \_\_\_\_\_ o'clock outside the Tate Modern.

2. Match the phrases and pictures.

2  **VOCABULARY** directions

a Match the phrases and pictures.



*on the corner*

*at the traffic lights*

*a bridge*

*opposite*

*at the end of the street*

*turn left*

*turn right*

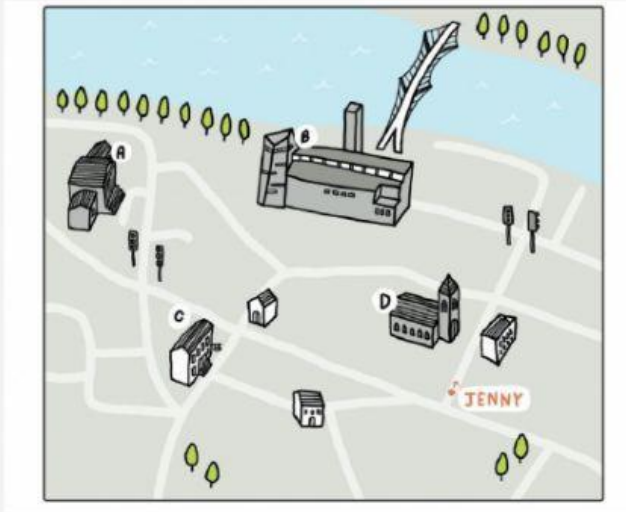
*go straight on*

*go past the church*

3. Watch the video. Jenny is trying to find the Tate Modern.

Is it A, B, C or D? - \_\_\_\_\_

How many people does she ask? - \_\_\_\_\_



4. Complete the conversation with the missing words.

- Excuse me, where's the Tate Modern?
- \_\_\_\_\_, I don't live here.
  
- Excuse me, is the Tate Modern near here?
- The Tate Modern? It's near here, but I don't know exactly \_\_\_\_\_. Sorry.
- Thank you.
  
- Excuse me. Can you tell me the way to the Tate Modern, please?
- Yes, of course. Go straight on. Go \_\_\_\_\_ the church, then turn \_\_\_\_\_ at the traffic lights. And it's at the end of the street.
  
- Sorry, could you say that again, please?
- Yes, go straight on. ... You can't \_\_\_\_\_ it.
- Thank you.

