

## FINAL TEST PREPARATION OF SCIENCE GRADE 6

	Full Name	:	_____	
	Class	:	_____	Attendance List : _____

*Bismillahirrahmaanirrahim*

Answer the questions based on the instruction given.

**10** Flowers have male and female organs.

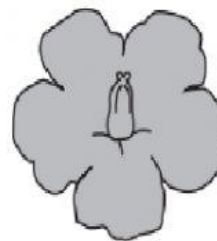
Here are three different flowers.



flower A



flower B



flower C

Complete the sentences.

Choose from the flowers **A B C**.

The flower that has male **and** female organs is flower .....

The flower that has female organs **only** is flower .....

The flower that has male organs **only** is flower .....

[1]

11 Anastasia has a mobile phone.



The mobile phone **rings**.

(a) She measures the **volume** of the sound with a sound level meter.

In what **units** is the sound level measured?

Circle the correct answer.

centigrade

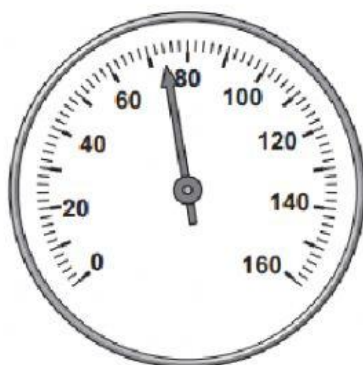
decibels

newtons

seconds

[1]

(b) Look at the reading on the sound level meter.



What is the **reading** on the sound level meter?

Circle the correct answer.

67

74

84

86

[1]

(c) Anastasia's phone is 1 metre from the sound level meter.

She moves it 5 metres away from the sound level meter.

What happens to the reading on the sound level meter?

Circle the correct answer.

decreases

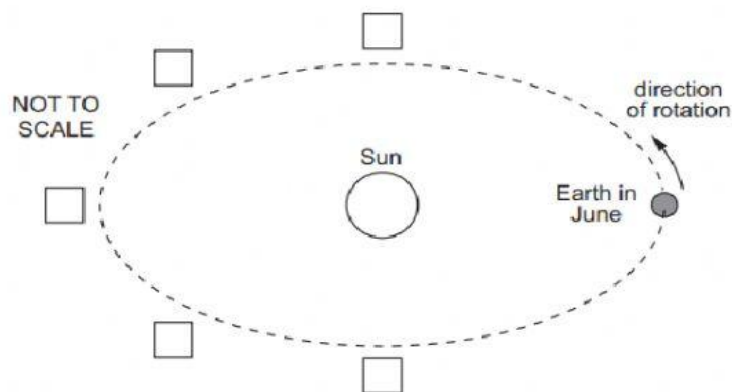
increases

stays the same

[1]

12 This question is about the Earth, the Sun and the Moon.

Lily draws a diagram to show the position of the Earth in the month of June.

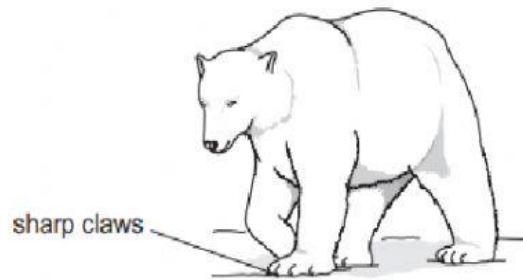


Put number 6 in the correct box to show where the Earth will be 6 months later.

Put number 9 in the correct box to show where the Earth will be 9 months later.

[2]

13 Look at the picture of a polar bear.



The polar bear is suited to its environment.

It has sharp claws.

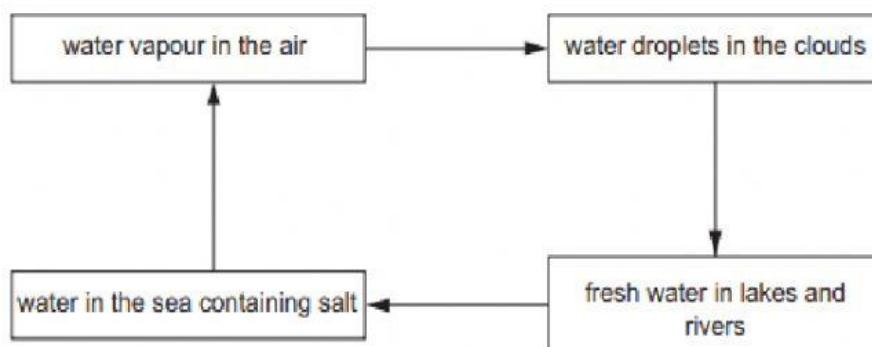
Write down two **other** ways it is suited to its environment.

1

2

[2]

14 The flow chart shows the movement of water through the environment.



(a) Name the process that changes **water in the sea** into **water vapour**.

[1]

(b) Name the process that changes **water vapour** into **water droplets**.

[1]

(c) When **ice** is warmed it changes into water.

What is the melting point of pure **ice**?

[1]

**15** Jamila and Blessy make a model arm.

They use strings to control the movement of the arm.



**(a)** Blessy pulls her string.

Complete the sentence.

When Blessy pulls her string, the forearm ..... [1]

**(b)** Which part of the arm does the string represent?

Circle the correct answer.

blood vessel

bone

joint

muscle

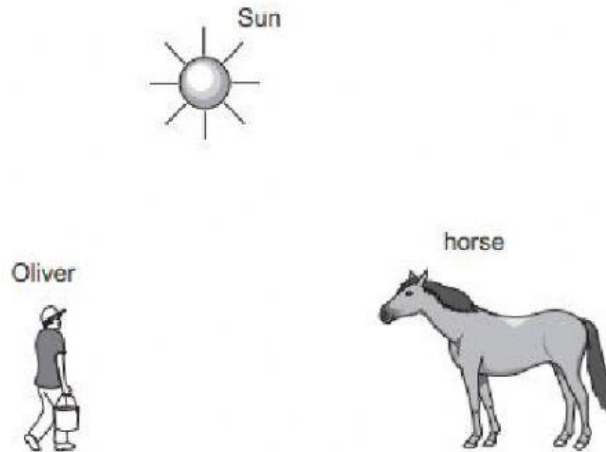
skin

[1]

16 Each day Oliver feeds his horse.

His horse sees him when he arrives.

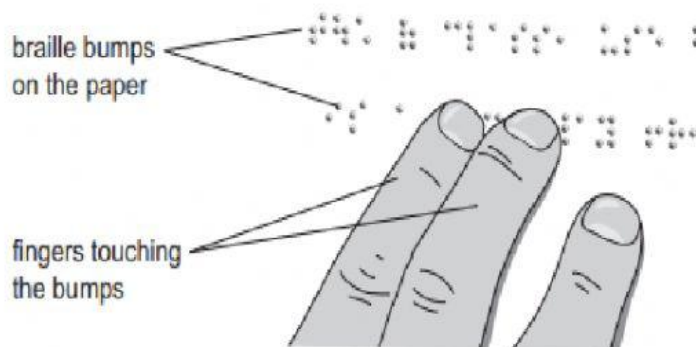
Here is a diagram of Oliver and his horse.



Draw rays of light on the diagram to show how the **horse** can see Oliver.

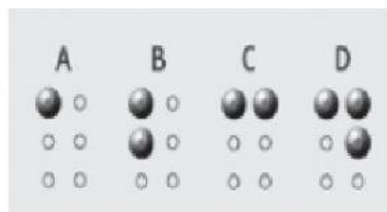
[3]

17 People who cannot see use **braille** to read.



Yuri investigates how people learn to read braille.

- Yuri asks six friends to feel a letter in braille.
- He shows the six friends the codes for different letters.



(a) Yuri predicts that letter A will be the easiest letter to feel.

Why will letter A be the easiest letter to feel?

[1]

(b) Describe how Yuri will know which of the six friends is the best at feeling braille.

[1]

18 Potassium nitrate is a fertiliser.

- Class 6 investigate how much of this fertiliser can be dissolved in 10cm<sup>3</sup> of water.
- They do several experiments.
- Each experiment has water at a different temperature.
- Class 6 then repeat the experiments to get a second set of results.

Here are their results.

temperature of water in °C	mass of fertiliser that can be dissolved in g	
	first experiment	second experiment
20	4.5	4.3
30	5.5	5.4
40	6.7	6.6
50	8.0	2.0
60	11.0	11.2



(a) They measure the temperature of the water.

What piece of apparatus do they use?

..... [1]

(b) They measure the mass of the fertiliser.

What piece of apparatus do they use?

..... [1]

(c) Why do they always use  $10\text{ cm}^3$  of water in each experiment?

..... [1]

(d) Class 6 decide that their results for one temperature need checking.

Which temperature is this?

..... °C

Explain your answer.

..... [2]

(e) Predict the mass of the fertiliser that can be dissolved in  $10\text{ cm}^3$  of water at  $70^\circ\text{C}$ .

The mass of the fertiliser is

..... g

Explain your answer.

..... [2]