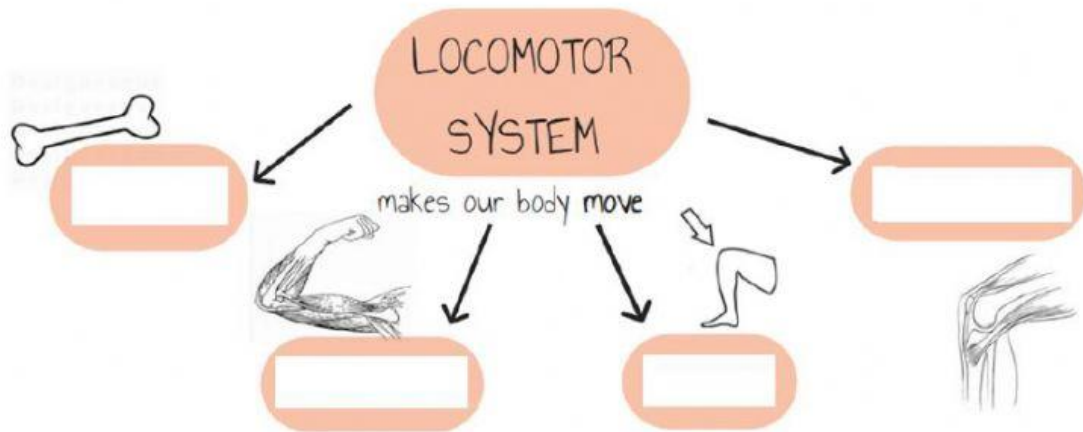


1- Write the parts of the locomotor system.



2- Write true or false:

Muscles are hard and flexible. \_\_\_\_\_

Muscles are elastic and flexible. \_\_\_\_\_

Bones make up the digestive system. \_\_\_\_\_

Bones make up the skeleton. \_\_\_\_\_

Bones support the body and protect the organs. \_\_\_\_\_

Tendons are where two or more bones meet. \_\_\_\_\_

Tendons attach the muscles to the bones at the joints. \_\_\_\_\_

3-Match the correct joint with the circle.

