

Name: .....

Date: .....

Year: .....

**EXERCISE 1.15: MASS (PART 1)**

1. Read the following scales and fill in the masses. Answer in grams.

(a)



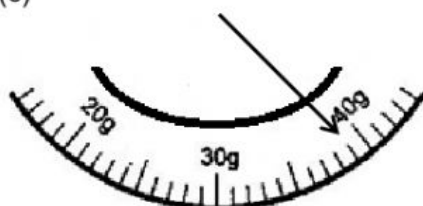
Answer: \_\_\_\_\_

(b)



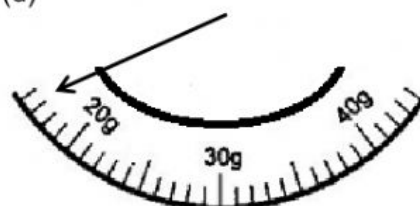
Answer: \_\_\_\_\_

(c)



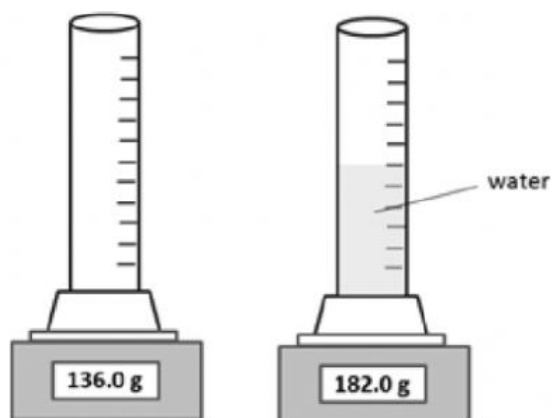
Answer: \_\_\_\_\_

(d)



Answer: \_\_\_\_\_

2. Calculate the mass of the water. (Show your working)



Mass of the water: \_\_\_\_\_

3. Mass measures the .....

- A. force of a substance
- B. dimension of a substance
- C. volume of a substance
- D. amount of a substance

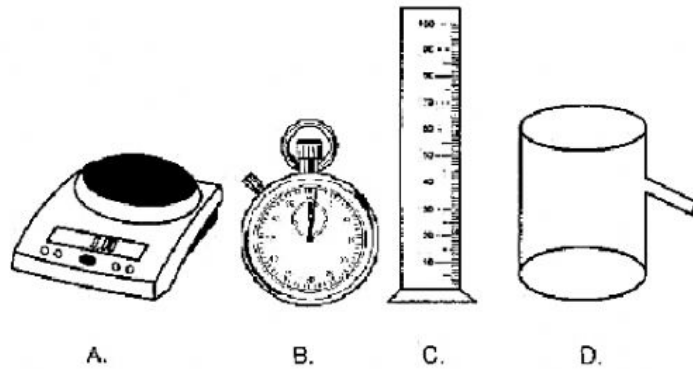
☐

4. The S.I unit of mass is .....

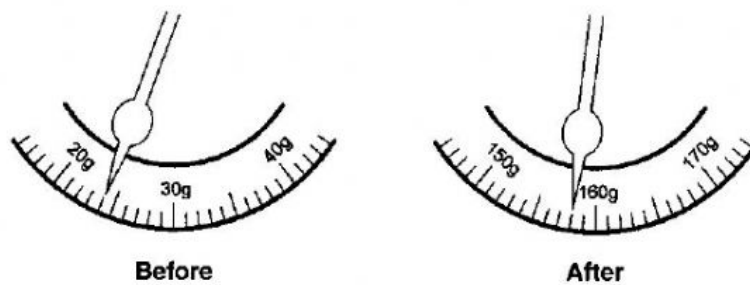
- A. meter
- B. newton
- C. kilogram
- D. cubic centimeter

☐

5. Which of the following instruments shown in the Figure below is used to measure mass accurately?


☐

6. Nurhafizah is using a weighing balance to weigh flour for baking cake. The Figure below shows the reading before and after the flour is placed on the weighing balance.



Calculate the mass of the flour.

- A. 128 g
- B. 134 g
- C. 144 g
- D. 158 g

☐