

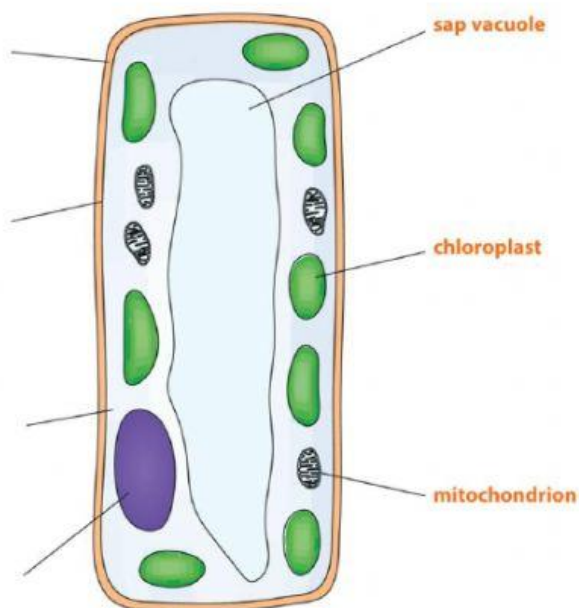
1. Every plant cell has this part. It is strong and stiff. It shapes the plant cell. This part is made of a substance called cellulose.
2. Most cells have this part. It controls the activities of the cell.
3. All cells have this part. It is like clear gel. Chemical reactions happen inside this part. These reactions keep the cell alive.
4. All cells have this part. It is very thin and flexible. It is like a gate. It controls what goes in and out of the cell.
5. All plant cells have this part. Inside it, energy is released from food.
6. Plant cells that are in the sunlight often contain this part. This is where plants make their own food. They look green because they contain a green substance called chlorophyll.
7. This is a large, fluid-filled space inside a plant cell. The liquid inside it is a solution of sugar and other substances in water. The solution is called cell sap.

cell wall

cell membrane

cytoplasm

nucleus



sap vacuole

chloroplast

mitochondrion

Diagram of a leaf cell