



# Science

Mark the organic waste with an **O** and the inorganic waste with an **I**.



petals



leaves



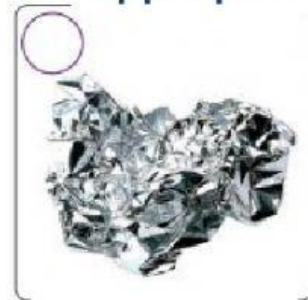
apple peel



plastic bag



glass disc



aluminium



bird's nest



plastic container



paper bag

I. \* Complete the following sentences:

1. \_\_\_\_\_resources can be found in nature .
2. \_\_\_\_\_ resources are produced by humans with materials from nature.
3. \_\_\_\_\_is the leftovers of living things.
4. \_\_\_\_\_ is the leftovers of man-made (artificial) resources .

**\* Natural**

**\* Inorganic waste**

**\*Artificial**

**\*Organic waste**