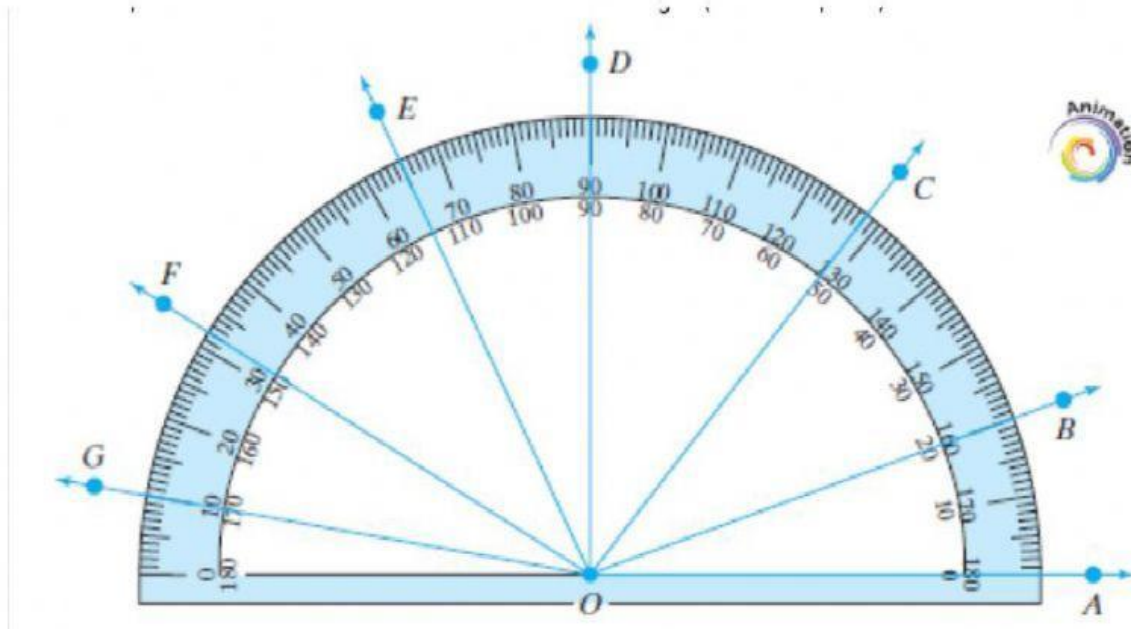


Geometry

Use the protractor below to find the size of the following angles:



1. $\angle AOB = \underline{\hspace{2cm}}^\circ$

2. $\angle AOC = \underline{\hspace{2cm}}^\circ$

3. $\angle DOE = \underline{\hspace{2cm}}^\circ$

4. $\angle AOD = \underline{\hspace{2cm}}^\circ$

5. $\angle AOE = \underline{\hspace{2cm}}^\circ$

6. $\angle AOF = \underline{\hspace{2cm}}^\circ$

7. $\angle AOG = \underline{\hspace{2cm}}^\circ$

8. $\angle COE = \underline{\hspace{2cm}}^\circ$

9. $\angle DOB = \underline{\hspace{2cm}}^\circ$

10. $\angle FOG = \underline{\hspace{2cm}}^\circ$

