

Name: Date:

THEME 2 – ENERGY AND FORCES.

Answer the following questions in the spaces provided.

Unit 6: Electricity.

1. Look at the picture in **Figure 1** carefully.



Figure 1

How is the boy's action dangerous?

- A. Inserting objects into electrical circuits.
- B. Switching off the power supply.
- C. Touching appliances or switches with dry hand.
- D. Touching the bare or broken wires.



2. A circuit was set up as shown in **Figure 2**.

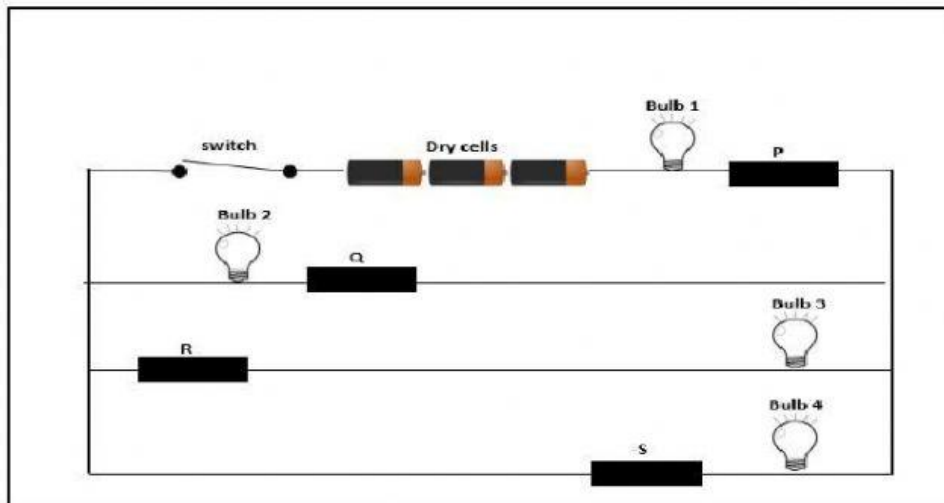


Figure 2

When the switch closes, only bulb 1 and bulb 3 light up, Identify objects **P**, **Q**, **R** and **S** correctly.



	P	Q	R	S
A	Steel paper clip	Iron rod	Gold ring	Wooden ruler
B	Iron rod	Plastic ring	Gold ring	Rubber eraser
C	Rubber eraser	Wooden ruler	Steel paper clip	Cotton wool
D	Gold ring	Glass rod	Iron rod	Steel paper clip

3. The situation in Figure 3 below may cause _____

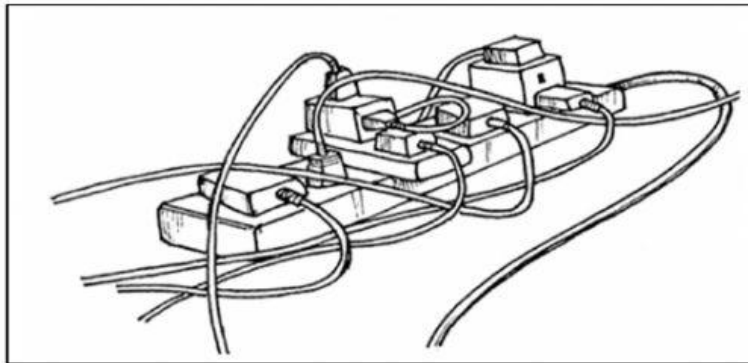


Figure 3

- I. A fire breakout.
- II. No effects at all.
- III. The overheating of cables.
- IV. The overloading of an electric circuit.

- A. II only
- B. I, II and III only.
- C. I, III and IV only.
- D. II, III and IV only.



4. Study the diagram in Figure 4 below;

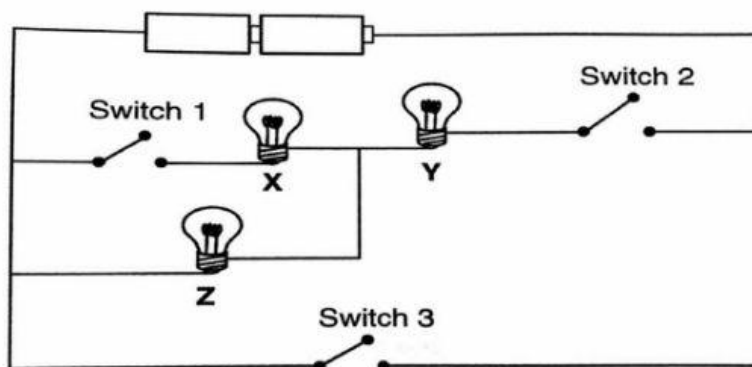


Figure 4

When only Switch 3 is closed, _____

- A. Bulb Z light up
- B. Bulbs X and Y light up
- C. Bulbs X, Y and Z will light up
- D. Bulbs X, Y and Z will not light up

5. Siti sets up an electric circuit as shown in **Figure 5**. She found the bulb did not light up.

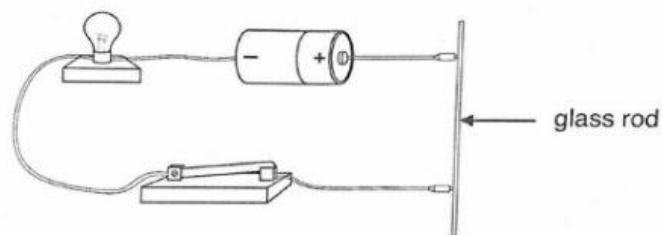


Figure 5

How can she make the bulb to light up?

- A. Add more dry cells.
- B. Use shorter wires and more dry cells.
- C. Use two light bulbs and longer wires.
- D. Replace the glass rod with an iron nail.

Marks: _____ / 5

Parents'/ Guardian's signature : _____

Parents'/ Guardian's feedbacks:

