

Name: \_\_\_\_\_

Date: \_\_\_\_\_

1. Complete:



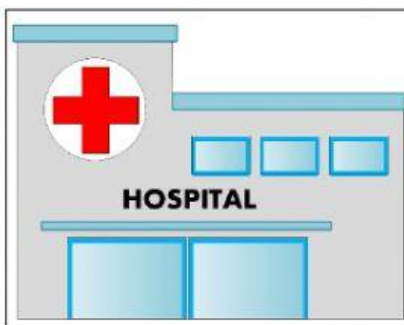
C \_ N \_ \_ \_ A



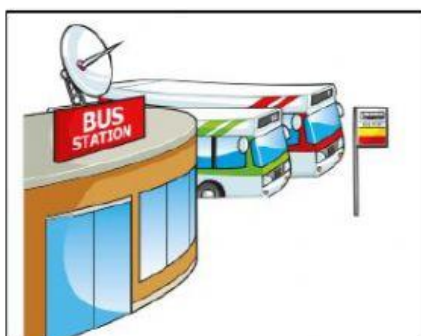
F \_ \_ \_ \_



S \_ P \_ RM \_ \_ \_ \_ ET



H \_ \_ \_ \_ \_



BUS S \_ \_ \_ \_ O \_

2. Write **THERE IS** or **THERE ARE**. Then, **drag and drop the correct plural**.

CHILD

MEN

MICE

COCONUTS

BABIES



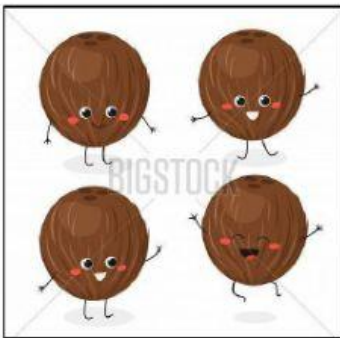
\_\_\_\_\_ EIGHTH \_\_\_\_\_



\_\_\_\_\_ SIX \_\_\_\_\_



\_\_\_\_\_ ONE \_\_\_\_\_

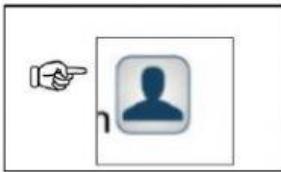


\_\_\_\_\_ FOUR \_\_\_\_\_

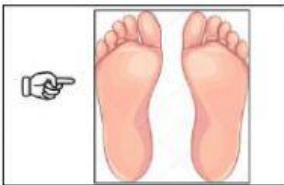


\_\_\_\_\_ FIVE \_\_\_\_\_

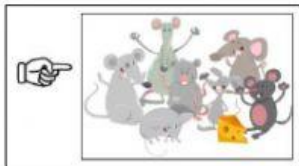
3. Choose the correct word:



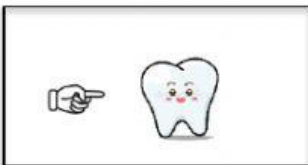
THIS IS / THESE ARE a PEOPLE PERSON



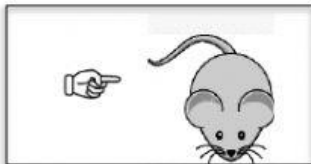
THIS IS / THESE ARE FOOT FEET



THIS IS / THESE ARE 7 MICE MOUSE

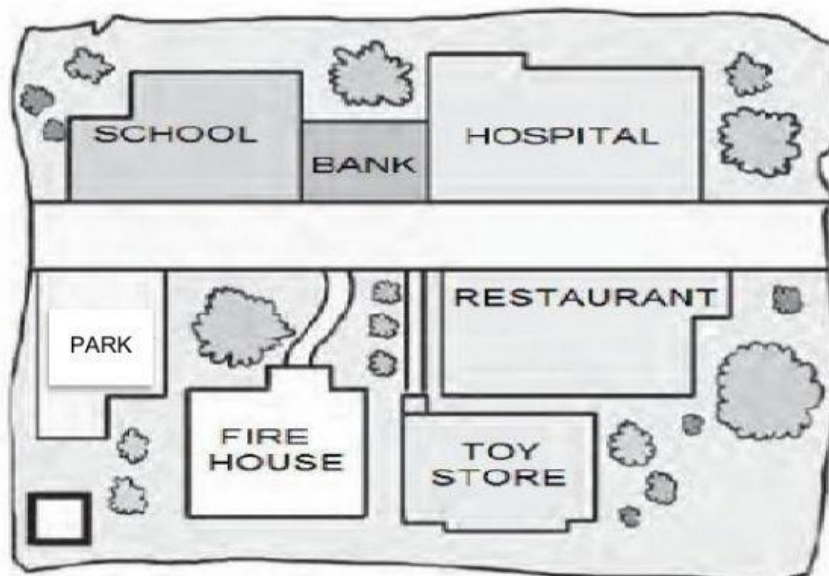


THIS IS / THESE ARE a TOOTH TEETH



THIS IS / THESE ARE a MICE MOUSE

4. Choose the correct preposition:



1. THE BANK IS BETWEEN / IN FRONT OF / BEHIND THE SCHOOL AND THE HOSPITAL
2. THE RESTAURANT IS ON / NEXT TO / IN FRONT OF THE HOSPITAL.
3. THE TOY STORE IS NEXT TO / IN / BEHIND THE RESTAURANT
4. THE SCHOOL IS BEHIND / BETWEEN / NEXT TO THE BANK.
5. THE PARK IS NEXT TO / ON / IN THE FIRE HOUSE.