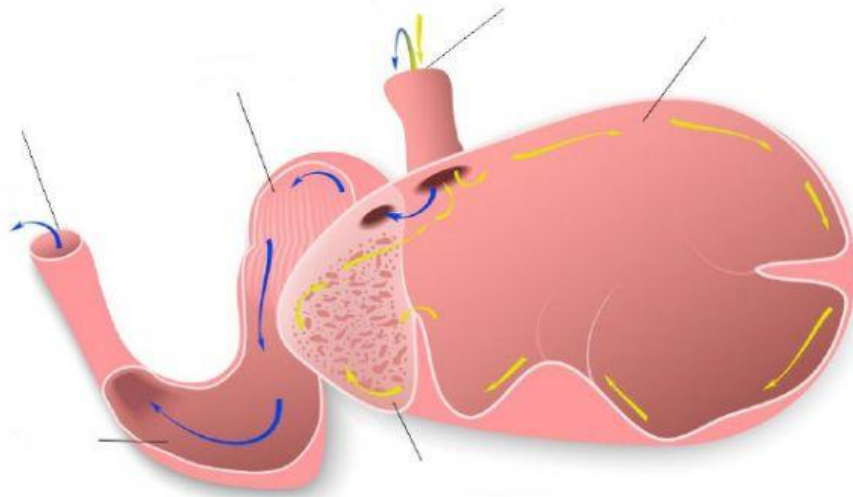


Structure And Function Of The Ruminant Digestive System

Label the diagram of the digestive system of the sheep by dragging the label below into their correct positions.



Omasum

Abomasum

Esophagus

Rumen

Reticulum

Small Intestine

2. Which of the following animals have a ruminant?

- (A) Dog
- (B) Cat
- (C) Sheep
- (D) Duck

3. Which of the following is true of all ruminants?
- (A) They all chew the cud
 - (B) They all eat only grass
 - (C) They are all livestock animals
 - (D) They are all domesticated.
4. How many compartments are there in the stomach of a ruminant?
- (A) One
 - (B) Two
 - (C) Three
 - (D) Four
5. Which of the following is **not** true of the ruminant?
- (A) They have no incisors in their top jaw.
 - (B) They regurgitate their food and chew it later.
 - (C) They have three compartments in their stomachs
 - (D) They all have a rumen.
6. In the digestive system of a sheep the major absorption of nutrients takes place in the ...
- (A) Rumen
 - (B) Intestine
 - (C) Omasum
 - (D) Reticulum

7. Which of the following represents the passage of food through the stomach of the ruminant?

(A) Mouth → esophagus → rumen → esophagus → Mouth → esophagus

→ Reticulum → Omasum → Abomasum → Small intestine

(B) Mouth → Esophagus → Rumen → Omasum → Abomasum → Small Intestine

(C) Mouth → Reticulum → Esophagus → Omasum → Small Intestine

→ Abomasum

(D) Mouth → Esophagus → Reticulum → Rumen → Omasum