

1. Match the terms on left with their description on the right.

<b>Humanism</b>	perfected the printing press in around 1440.
<b>Patron</b>	was a religious movement in 16th century in Europe.
<b>Heliocentrism</b>	was the philosophical and cultural movement in Europe.
<b>Counter-Reformation</b>	a theory that places the Sun at the centre of the universe.
<b>Guttemberg</b>	wealthy noblemen and burghers, they supported artists.
<b>Reformation</b>	was a reform movement within the Catholic Church to resist Protestantism.

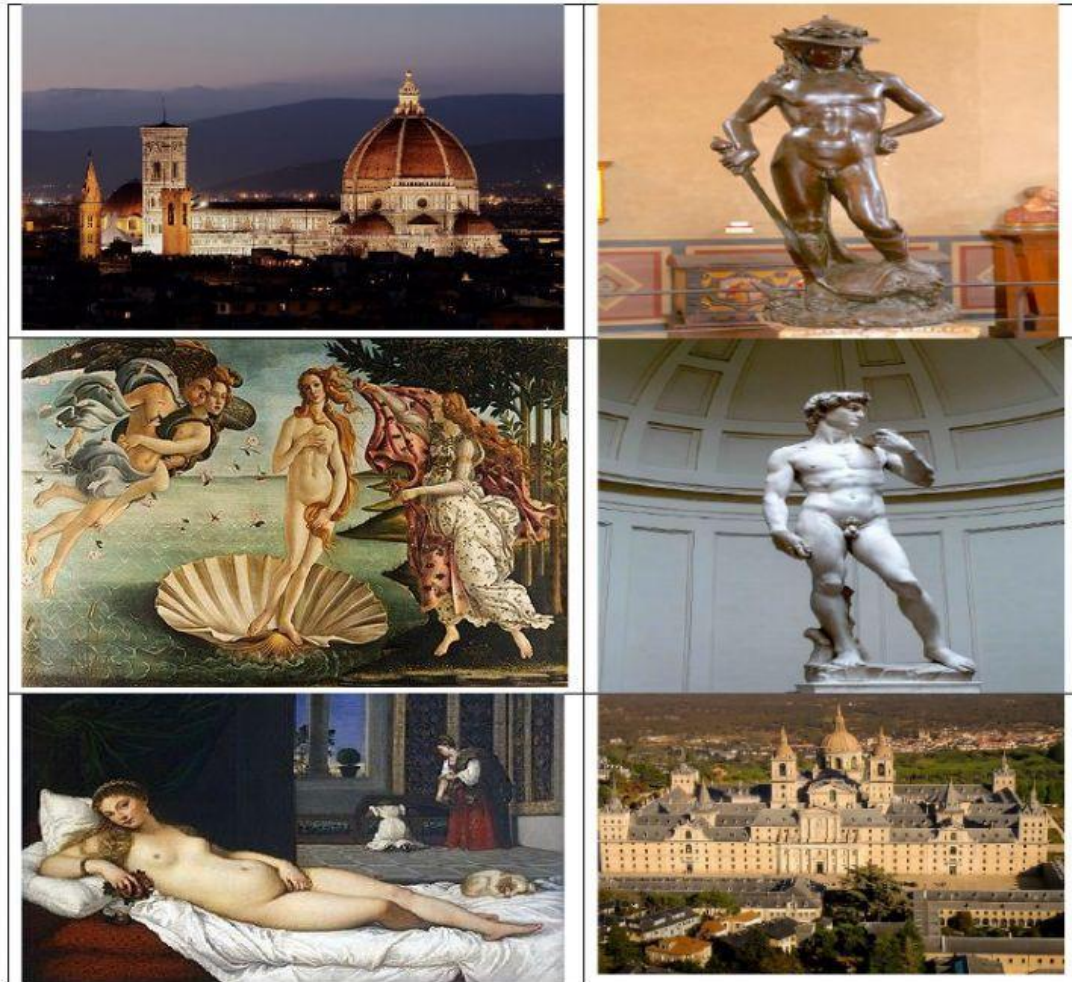
2. Mark if the following characteristics belong to Humanism:

Theocentric	Anthropocentric	No felt curiosity
Use of the reason	Read medieval text	Heliocentrism

3. Complete the following sentences:

- a) The Renaissance Art found inspiration in the.....The Renaissance style began in ..... and divided in two main stages. They are the ..... and .....
- b) The patrons were noblemen and burghers they supported the ..... They belong to many important families such as .....
- c) Architects in the Renaissance art looked for..... and ..... They made use of classical features such as .....
- d) The .....(1545-1563), adopted a series of resolutions: It confirmed ....., and ....., the seven sacraments, the cult of the Virgin and the saints and the validity of good works. It prohibited sale ....., ..... was created to form clergy and the catechism.

4. Identify the following masterpieces and the artist who created them.



The dome of the Florence cathedral.	Tizian.	David.
Michelangelo.	Brunellesci.	The Venus of Urbino.
The Birth of Venus.	Juan de Herrera.	Donatello.
Botticelli.	David.	The Monastery of San Lorenzo.