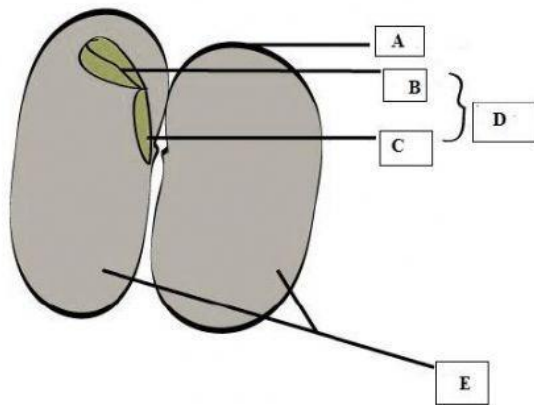


Student name: \_\_\_\_\_ Date: \_\_\_\_\_

Agricultural Science

Form: \_\_\_\_\_



Word List

Cotyledon

Testa

Plumule

Embryo

Radicle

1. Label the following: (5 Mks)

A \_\_\_\_\_

C \_\_\_\_\_

B \_\_\_\_\_

D \_\_\_\_\_

E \_\_\_\_\_

2. Match the bean parts to its functions:

Parts	Functions
	Stores food materials for the young plant.
	Grows to become the shoot.
	Develops into the root system.
	Consists of the plumule and the radicle and gives rise to the new plant
	Gives protection to the cotyledons and embryo in their early stages.

Word List

Cotyledon

Testa

Plumule

Embryo

Radicle