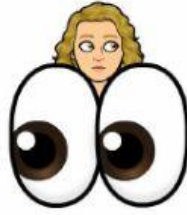


# REVIEW MATTER Y6



1 Write the best method to separate each mixture. Explain your answers.

water and alcohol → \_\_\_\_\_  
 \_\_\_\_\_

water and salt → \_\_\_\_\_  
 \_\_\_\_\_

water and sand → \_\_\_\_\_  
 \_\_\_\_\_

2 Write the states shown in the photos. Then write *heating* or *cooling* to show what can cause the physical change.



\_\_\_\_\_

\_\_\_\_\_

3 Unscramble the words and complete the table.

netondonsica    glintem    bomulinasti    inopetovara    afiodsoliictin

changes of state by cooling	changes of state by heating
reverse sublimation	_____
_____	_____
_____	_____

**4** Read the sentences and write *physical change* or *chemical change*.

- a. New substances are produced. \_\_\_\_\_
- b. They are caused by changes in temperature. \_\_\_\_\_
- c. Chemical reactions cause these changes. \_\_\_\_\_
- d. They happen when two or more substances combine. \_\_\_\_\_
- e. The original substance stays the same. \_\_\_\_\_
- f. They are irreversible changes. \_\_\_\_\_

**5** Complete the cards about these new materials.

**Eco-friendly fleece**

Made from: \_\_\_\_\_

Properties: \_\_\_\_\_

Uses: \_\_\_\_\_

**Recycled cotton fibre**

Made from: \_\_\_\_\_

Properties: \_\_\_\_\_

Uses: \_\_\_\_\_

**6** Read and write the type of chemical change.

- a. Bread dough rises. \_\_\_\_\_
- b. Wood transforms into smoke, ash and heat. \_\_\_\_\_
- c. Milk transforms into yogurt. \_\_\_\_\_
- d. The edges of a piece of fruit turn brown. \_\_\_\_\_
- e. Milk transforms into kefir. \_\_\_\_\_
- f. An old metal fence turns rough and brown. \_\_\_\_\_

