

## TEST UNIT 4 MONEY AND BUSINESS

**1.- Correct the false sentence:** A money box is similar to a bank account because it pays interest.

**2.- It employs a small number of people.**

A small business

A multinational

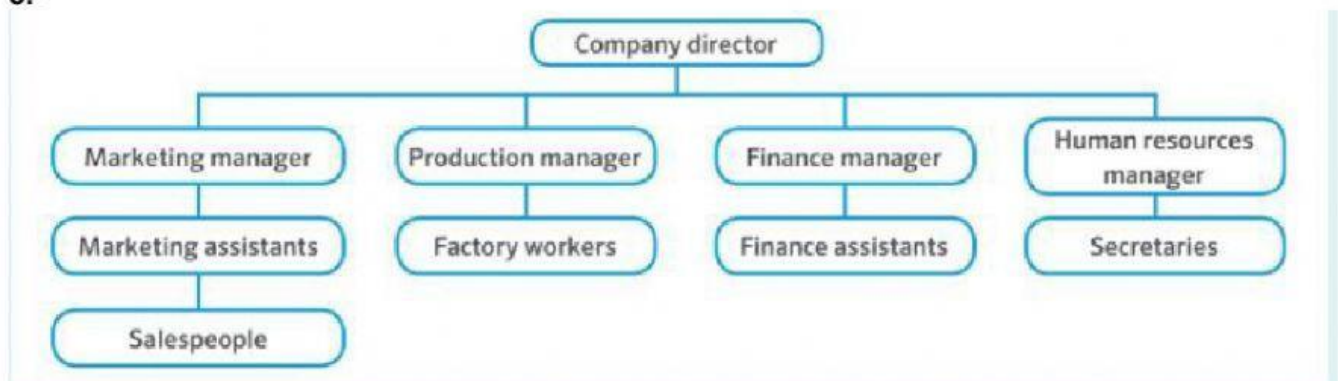
**3.- Correct the false sentence:** A savings account has a debit or credit card, which makes it easier to save.

**4.- Businesses use budgets to plan how much they will spend on costs.**

True

False

**5.-**



**The company director has the most important job.**

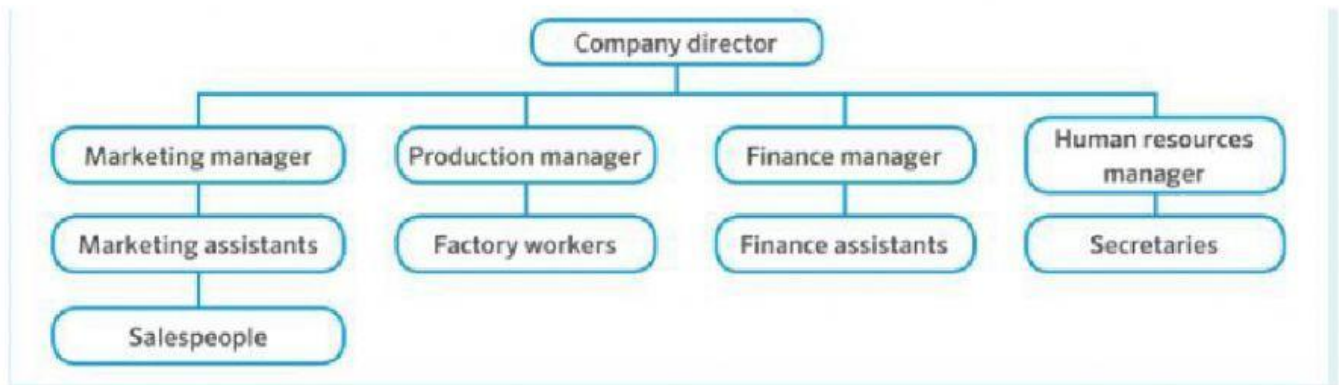
True

False

**6.- Correct the false sentence:** When we use a credit card, the money leaves our bank account immediately.

**7.- Correct the false sentence:** Interest is a small amount of money that you receive when you buy shares.

8.-



The Finance manager has not the same level of responsibility as the Production manager.

True

False

9.-

**Read** about Sarah's problem. Then answer the question.

Sarah has a problem. Next month it will be her mum's birthday and she wants to buy her some earrings she has seen in a shop on the High Street. But Sarah hasn't got enough money. The earrings cost 15 Euros. Sarah gets 2 Euros a week for pocket money. She has 5 Euros in her money box. Her mum's birthday is in four weeks. What can she do?

- a) How much money has Sarah saved?
- b) How much more does she need to get the earrings?
- c) How much pocket money does she get each week?
- d) If she saves all her pocket money from now until her mum's birthday, how much will she have?
- e) What do you think she should do to get the extra money she needs?

a)

b)

c)

d)

e)

**10.- Write three examples of high order products and where you can buy them.**

**11.- All the people who work in the company are also the owners.**

Cooperative

Multinational

Self-employed

**12.- The company is owned by the shareholders. Often, thousands of people are employed.**

Cooperative

Corporation

