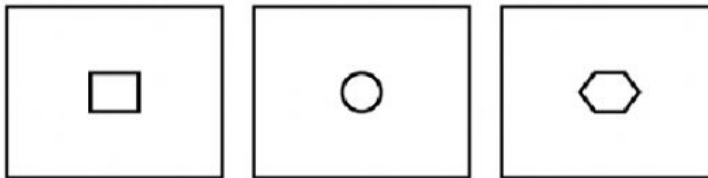




Fill in the blanks.

1. Using a pinhole camera a student observes the image of two of his friends, standing in sunlight, wearing yellow and red shirt respectively. What will be the **colours of the shirts** in the image? _____
2. You have 3 opaque strips with very small holes of different shapes as shown in figure given below. If you obtain an image of the sun on a wall through these holes, will the image formed by these holes be the **same or different?** _____

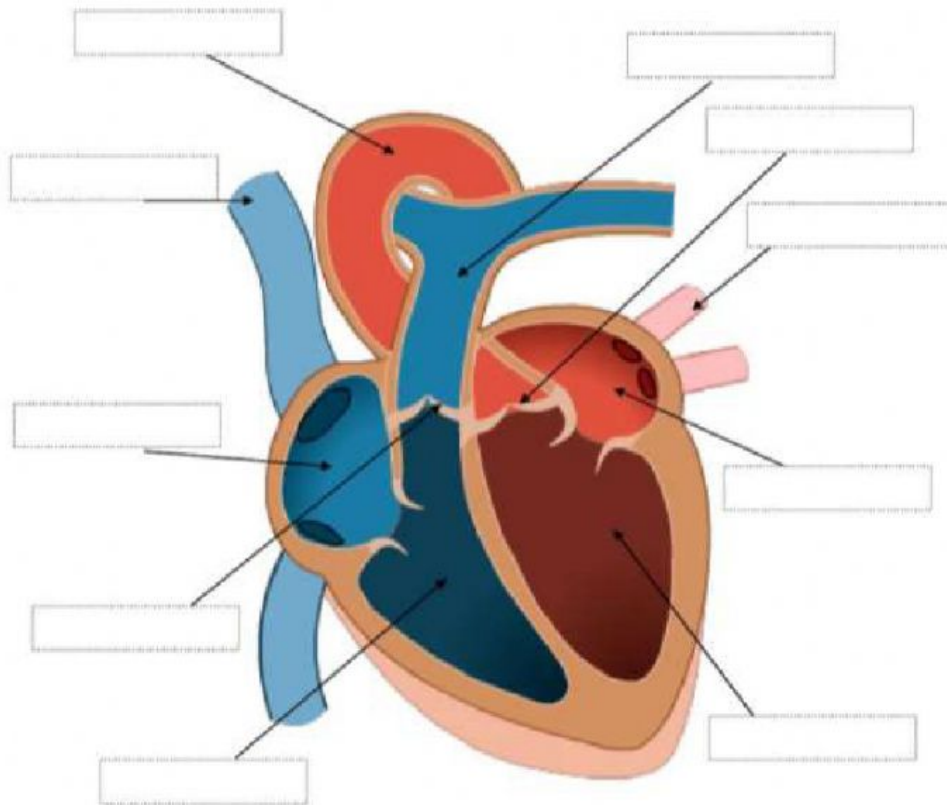


Choose the correct answer from the options given below:

1. Pinhole camera is a simple application of:
 - A. Reflection of Light
 - B. Rectilinear Propagation of Light
 - C. Refraction of Light
2. What is the role of aperture in pinhole camera?
 - A. Sharpens the image
 - B. Allows light to enter to form an image
 - C. Diffracts light passing through it
3. State whether true or false, a pinhole camera can take pictures of moving objects.
 - A. True
 - B. False

Label the heart:

Drag and drop the names of the part to correct location:



- | | | | |
|------------------|------------------|------------------|----------------|
| pulmonary artery | pulmonary vein | aorta | left ventricle |
| right ventricle | left atrium | right atrium | vena cava |
| | semi-lunar valve | semi-lunar valve | |

Match the following:

	Column I (Measure of triangle)		Column II (Types of triangle)
(a)	3 sides of equal length	(i)	Obtuse angled
(b)	1 right angle	(ii)	Right angled
(c)	2 sides of equal length	(iii)	Equilateral
(d)	1 obtuse angle	(iv)	Isosceles

Watch the video and choose the correct answer:



1. A scalene triangle has

2. A square has

3. The letter O of the English alphabet has
