

Name: _____

Grade: _____

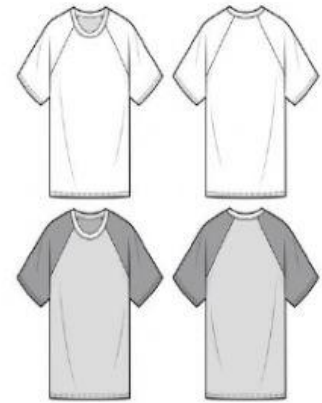
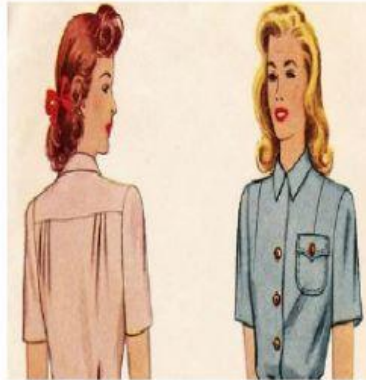
Subject: Clothing Construction & Craft

Date: _____

Sleeves

Identify the sleeves in the illustrations below. Then answer the questions that follow about the three basic sleeve styles.

1)



A) _____

B) _____

C) _____

- 2) The _____ sleeve is easy for beginning sewers to make because it is cut one piece with the front and back of the garment.
- 3) When a set- in sleeve needs very little easing, you may use the sewing technique called the _____ method.
- 4) The only sleeve that contains a dart is the _____ sleeve.
- 5) Seam tape is used to reinforce the seam of the _____ sleeve.
- 6) To create puff sleeves on a toddler girl's dress, follow the steps of the _____ method for _____ sleeves.
- 7) A soft flannel baby gown is usually constructed with _____ sleeves.
- 8) The sleeves on the garment you are wearing today are the _____ style.