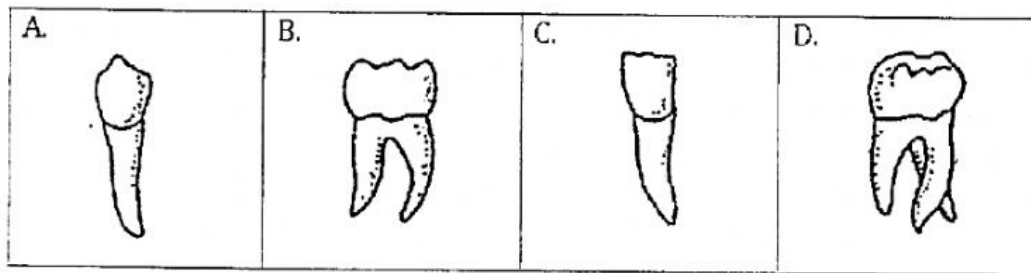
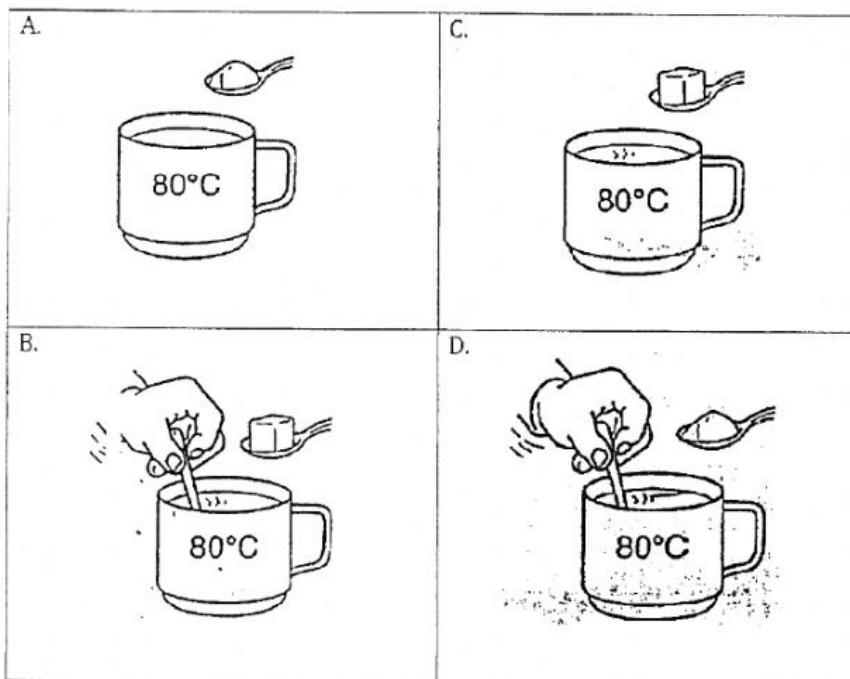


11. Which of the following teeth is used for tearing meat from bones?



12. The diagrams below show the same amount of sugar being dissolved in equal volumes of hot water in each cup. In which cup will the sugar dissolve the fastest?



13. Ali tries to classify the environmental changes shown in **Figure 2** below, as natural changes and change brought by human activities. Which one of the following classification is **correct**?

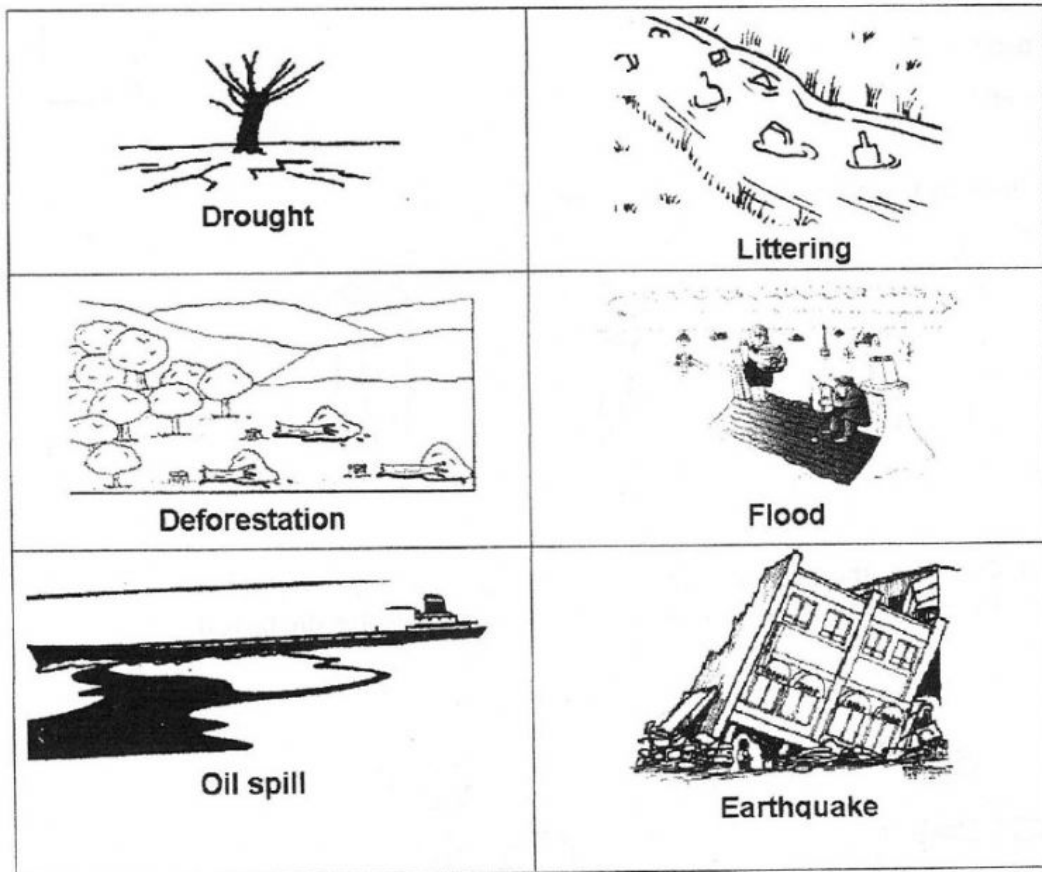


Figure 2

	Natural Change	Change by human activities
A	Deforestation, earthquake and littering	Drought, flood and oil spill
B	Drought, earthquake and littering	Oil spill, flood and deforestation
C	Drought, flood and earthquake	Oil spill, deforestation and littering
D	Flood, earthquake and deforestation	Drought, littering and oil spill



14. **Figure 3** below shows how water changes from one state to another

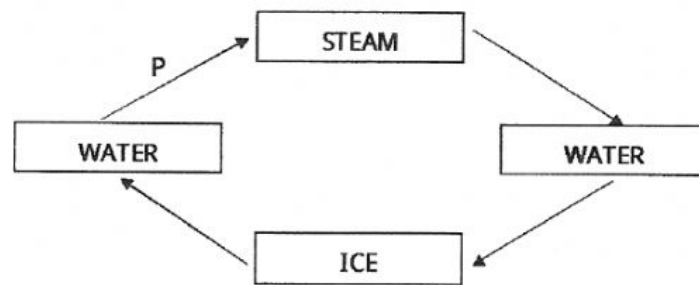


Figure 3

Name the process P.

- A. Boiling
- B. Melting
- C. Freezing
- D. Condensation

15. **Figure 4** below shows a frying pan used for frying fish.

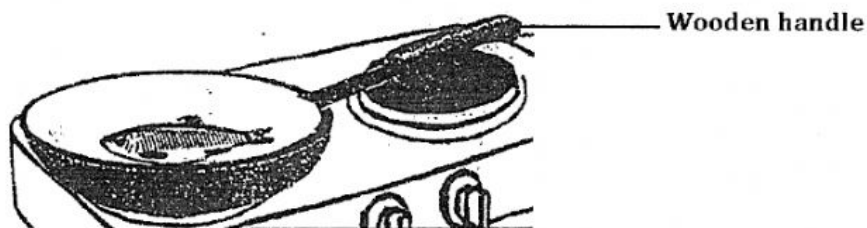


Figure 4

Why does the wooden handle of the frying pan not feel hot although the frying pan is used for cooking?

- A. Heat flows through wood.
- B. Heat is absorbed by the wood.
- C. Wood is good conductor of heat.
- D. Wood is a poor conductor of heat.

16. Which part of the plant in **Figure 5** below is responsible for making food?

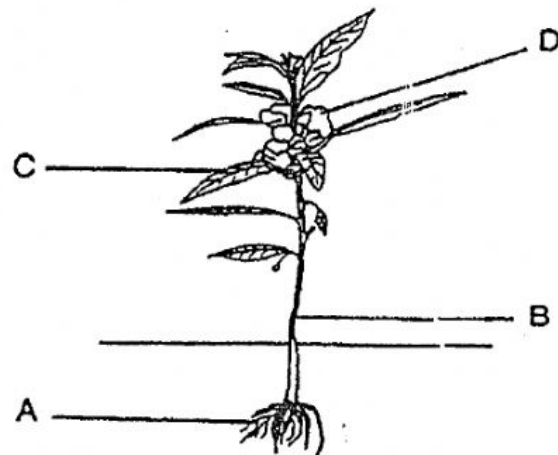
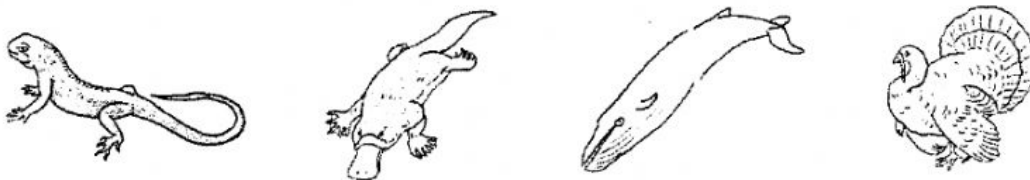


Figure 5

17. In what way the animals below similar?



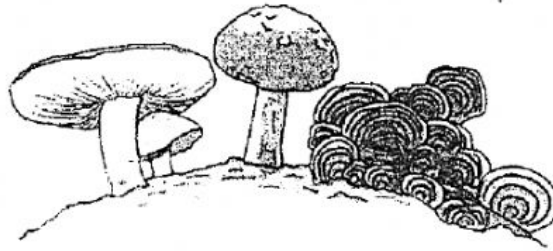
- A. They live on land
- B. They have scales
- C. Their young hatch from eggs
- D. They breathe with their lungs

18. Which of the following statements about energy are true?

- I. Energy can be created
- II. Energy can be stored in our body
- III. Energy is needed to do work

- A. I, II and III
- B. I and II only
- C. I and III only
- D. II and III only

19. Observe the following organisms carefully.



Which group do they belong to?

- A. Fungi
- B. Plants
- C. Animals
- D. Bacteria

☐

20. **Figure 6** below shows a mercury thermometer. What is the temperature shown and state one limitation of this type of thermometer.

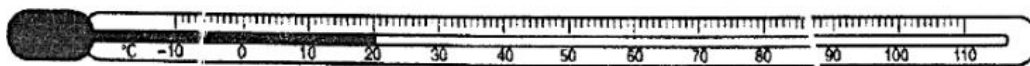


Figure 6

	Temperature	Limitation of thermometer
A	10°C	Thermometer scale is difficult to read
B	10°C	Cannot measure very high temperature
C	20°C	Mercury vapourises easily and wet glass
D	20°C	Cannot measure very low temperature

☐