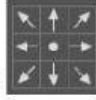




- 11) When applying this option  the canvas will be added from:
1. Both sides
 2. Left side only
 3. Right side only
- 12) To zoom out an image the keyboard shortcut is used:
1. CTRL+
 2. CTRL#
 3. CTRL-
- 13) A tool that allows you to apply the same size to different pictures is:
1. Crop tool
 2. Lasso tool
 3. Blur tool
- 14) To maintain a good quality of the images set the resolution to:
1. 5000
 2. 200
 3. 1800
- 15) To confirm the selection press on:
1. Space key
 2. Enter key
 3. Alt key
- 16) To confirm the dimensions of the image after setting the width & height of the crop tool, click on:
1. Image – Image size
 2. Image – Mode
 3. Filter – Noise
- 17) To move a selected / cut picture on the background image on Photoshop, use the:
1. Quick selection tool
 2. Move tool
 3. Eraser tool
- 18) The command Select – Inverse is used when:
1. The background is selected
 2. Nothing selected
 3. The canvas selected
- 19) In case there's a color contrast between the background and the object use the:
1. Magnetic Lasso tool
 2. Polygonal lasso tool
 3. Magic wand tool
- 20) To apply an effect on a text, first select it's layer then execute the command:
1. Layer – layer style
 2. Filter – Dust
 3. Image – rotation
- 21) This toolbar  appears after clicking on the text tool and used to:
1. Resize the canvas
 2. Change the title/text properties
 3. Image borders
- 22) By clicking on Image – adjustments – levels or CTRL + L, you can:
1. Lighting a dark image
 2. Open many pictures
 3. Setting a grayscale mode

QB. Answer with True or False:

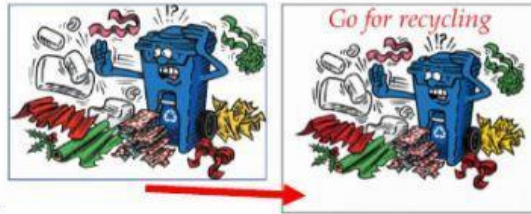
1. The command Image – mode – grayscale used to convert a colored picture to sepia colors.
2. The magic wand tool is used to select a plain color with one click.
3. To change the size of a layer press on CTRL+T or click on edit – free- transform.
4. By changing the value of the feather, the softness of the edges can be changed.
5. To remove the selection, use the shortcut CTRL+D.
6. In Photoshop all the tools are shown and none of it hidden behind additional tools.
7. Even if a small part of the image is selected, the size will be equal to the one set by the crop tool.
8. By default, the canvas has exactly the same size as the image.
9. Rotating the image by 90 counterclockwise, will turn the image 90 degrees to the right.
10. Photoshop can be used for creating montage and correcting images.
11. Set the Measurement for width and height in Pixels If the image will be used in Web, PowerPoint or sent by email.



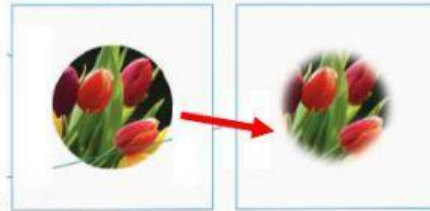
12. Those settings  are used to change the brush tool properties.
13. Each time a new image pasted on the background picture will be placed in a new layer.
14. It's possible to open many pictures at the same time.
15. The Sepia colors effect gives the picture an old appearance and it's applied by clicking on image – adjustments – Hue/saturation.



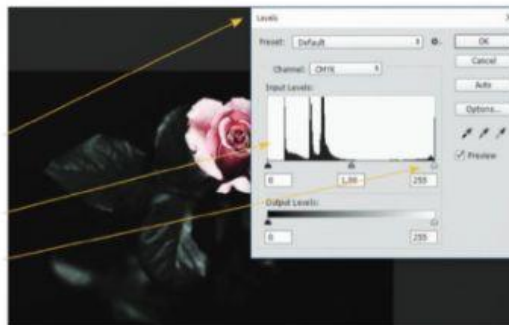
16. The color style of this picture  is greyscale.



17. The changes applied to the following image are: more pixels added around canvas and a text inserted.



18. The edit that applied for the selected picture borders is , Auto select.



19. The following settings showing: Lighting an image.

20. To select the entire image press on, CTRL+C.

21. To select shapes manually the lasso tool can be used.