

## The Male and Female Interactive Worksheet

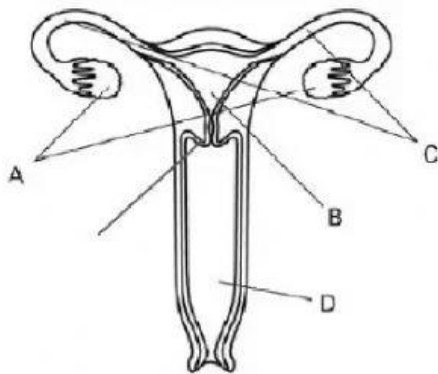
**Directions:** Label the diagram below

**Word Bank**

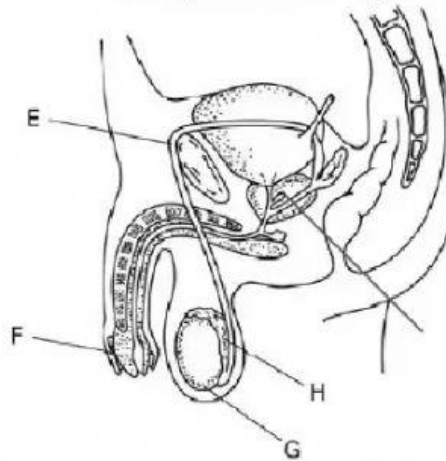
cervix ovary prostate uterus epididymis fallopian tubes testes vagina  
urethra opening vas deferens

.....

Female Reproductive Organs



Male Reproductive Organs



- .....
- a.
  - b.
  - c.
  - d.
  - e.

- f.
- g.
- h.
- i.
- j.

1. List the male parts, in order, for which sperm and semen are produced and released.

Word Bank: urethra opening testes prostate epididymis vas deferens

- a.
- b.
- c.
- d.
- e.

2. List the female parts, in order, for which an egg/ovum is created and released.

Word Bank: vagina ovary cervix fallopian tube uterus

- a.
- b.
- c.
- d.
- e.