

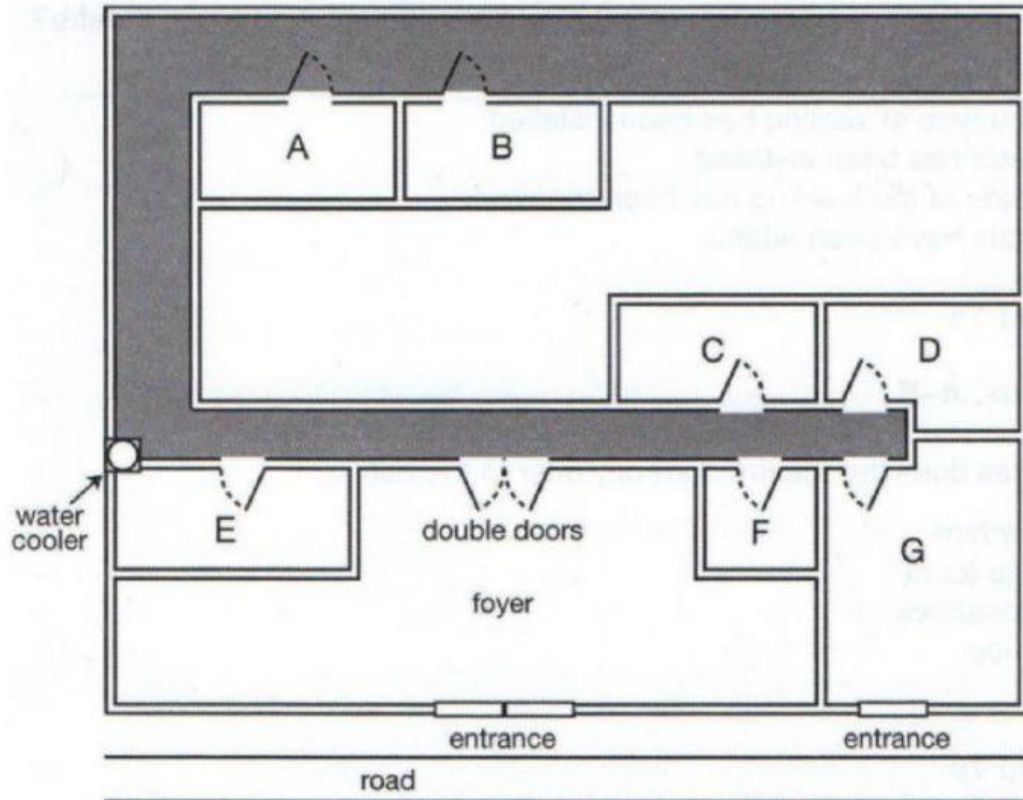
Track 57

Questions 17-20

Label the plan below.

Write the correct letter, A-G, next to Questions 17-20.

Ground floor plan of theatre



- 17 box office
- 18 theatre manager's office
- 19 lighting box
- 20 artistic director's office

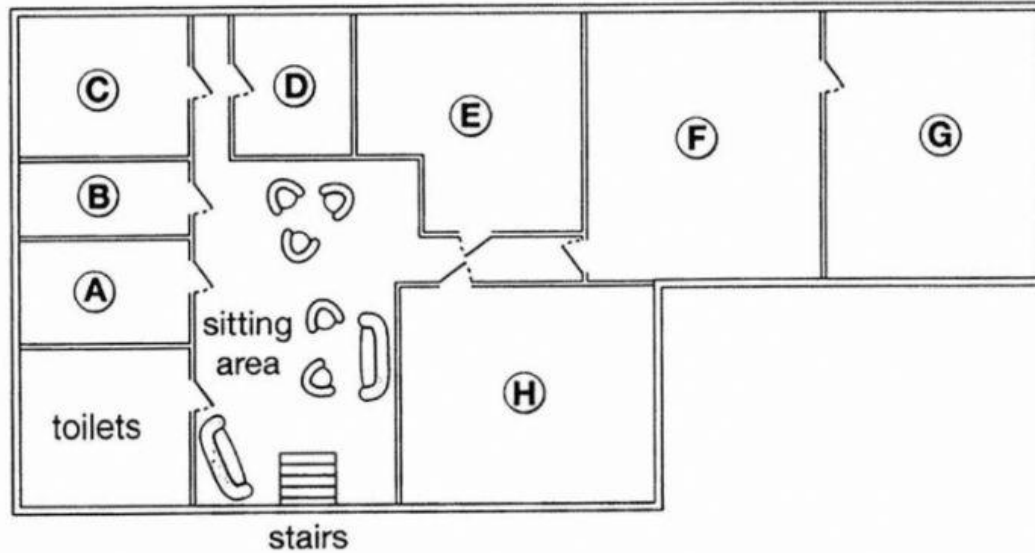
Track 58

Questions 17-20

Label the plan below.

Write the correct letter, A-H, next to Questions 17-20.

Basement of museum



- 17..... restaurant
- 18 café
- 19..... baby-changing facilities
- 20..... cloakroom