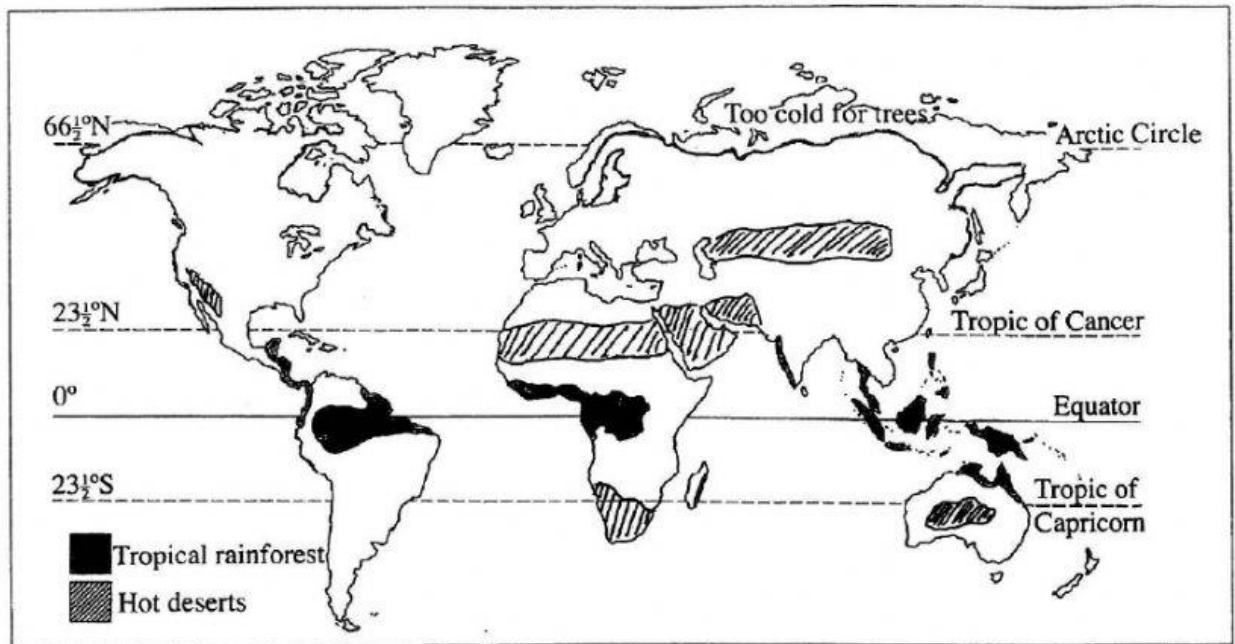


- (c) Fig 3 shows the Tropical Rainforests and Hot Desert regions that are sparsely populated.



Principles of Caribbean Geography – N. London

- (i) Explain **TWO** reasons for the sparse population of each region below.

Rainforests:

[4]

Hot Deserts:

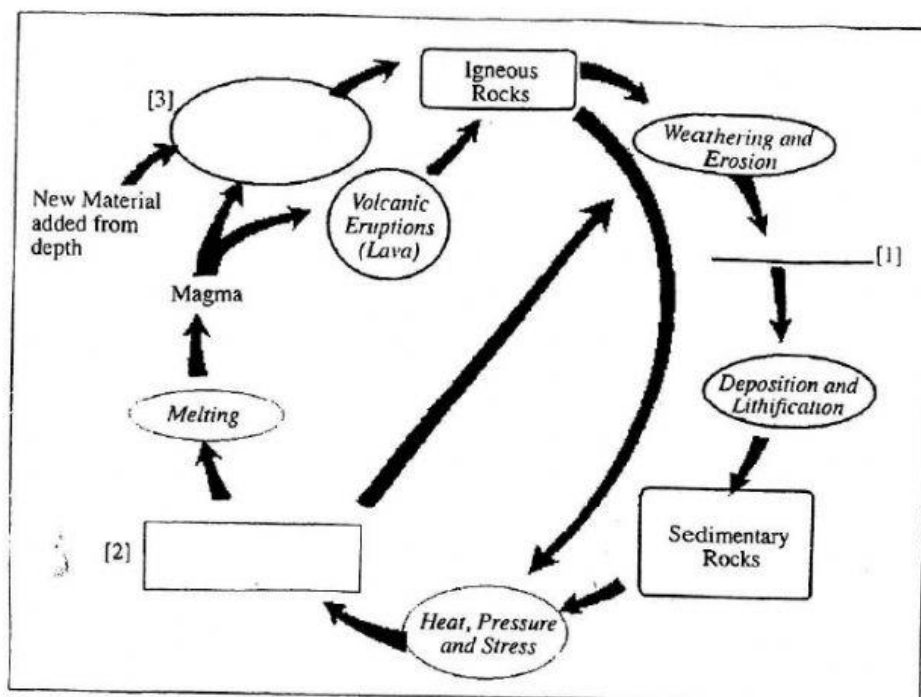
[4]

- (ii) Discuss **THREE** ways in which a country may control its population.

[6]

5. (a) (i) Complete the diagram below of the Rock Cycle, by labelling the parts numbered 1, 2, 3, using the following labels:

Metamorphic rock cooling & crystallisation sediments



Google.com

[3]

- (ii) Differentiate between igneous and metamorphic rocks.

Igneous rocks	Sedimentary rocks
(a)	(a)
(b)	(b)

[4]

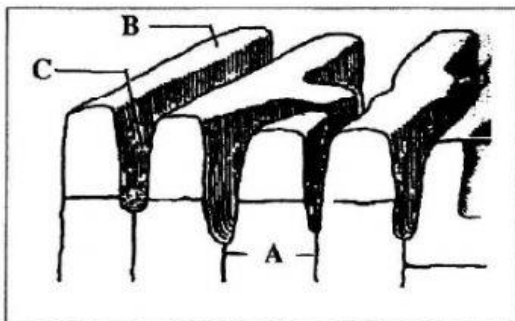
- (iii) State **THREE** examples of sedimentary rocks.

[3]

- (b) (i) "Limestone is a valuable resource". Explain **THREE** uses of limestone rocks.

[6]

- (ii) Fig 4 shows a weathered limestone structure. Name the features labelled A, B, C.



General Geography in Diagrams – Bunnet

A _____

B _____

C _____

[3]