



UNIT 6 – READING WORKSHEET

NAME: \_\_\_\_\_

DATE: \_\_\_\_\_

# The Flypaper Plant

The butterwort is a plant that needs meat! Most species grow in wet areas of Central and South America. Butterworts can't get enough nutrients from the ground. What do they do? Insects are added as a food!

The flower of the butterwort is purple. It sits on a tall stem that has no leaves. All the leaves are near the ground. They are bright green with turned-up edges.

The top of the leaf is shiny and watery. Thirsty insects are tricked by the watery leaf. It isn't water! Instead, it's a sticky water that feels like butter!



When an insect lands on a leaf, it is trapped. The insect is stuck on the leaf like a fly on flypaper. When it tries to get away, the butterwort makes more sticky water. The edges of the leaf turn up even more to hold the sticky water. Slowly, the soft parts of the insect are digested by the sticky water. It's a strategy for survival that works! Butterwort leaves often have spots that are really tiny insect skeletons!

## 2 Check T for True and F for False.

1. Most butterwort species grow in dry areas of Central and South America.
2. The butterwort grows in ground that has lots of nutrients.
3. The leaves of the butterwort are high on the stem.
4. Insects are digested by a sticky water on the leaves.

T  F

T  F

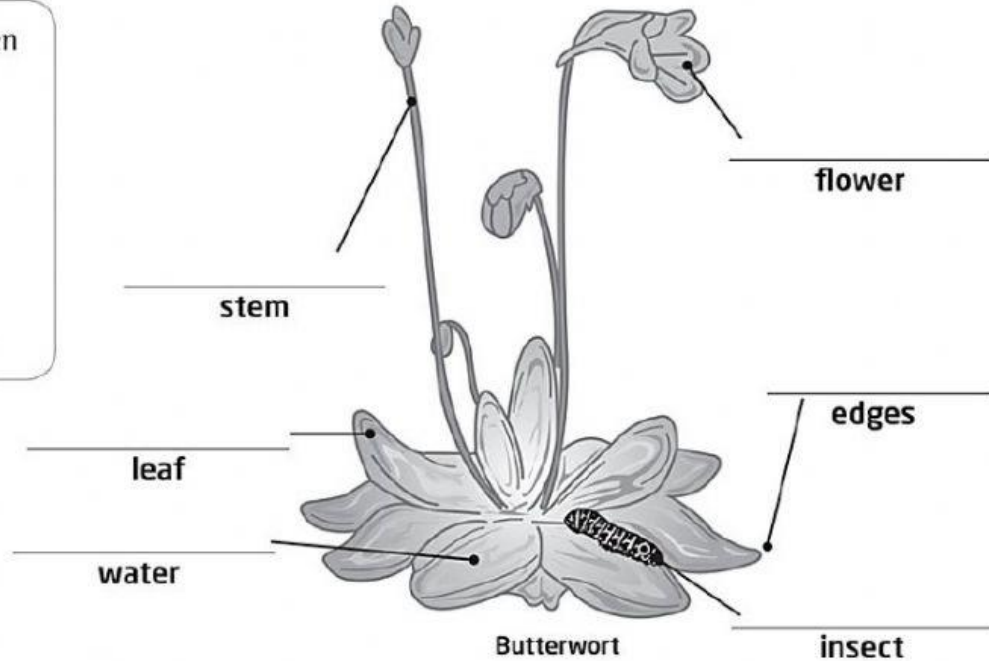
T  F

T  F



**3 Label the picture.** Use information from Activity 1.

- bright green
- purple
- sticky
- stuck
- tall
- turned-up



**4 Read and write.** Number the order of events that happen when a fly is trapped.

- The insect gets stuck on the leaf like a fly on flypaper.
- The soft parts of the insect are digested.
- More sticky fluid is made, and the edges of the leaf turn up.
- The insect flies onto the leaf.

**5 Write.** Describe as many parts of the butterwort plant as you can. Then compare your answers with a partner.

The stem \_\_\_\_\_ has no leaves \_\_\_\_\_.

The stem \_\_\_\_\_.

The leaves \_\_\_\_\_.

The leaves \_\_\_\_\_.

The top of the leaf \_\_\_\_\_.