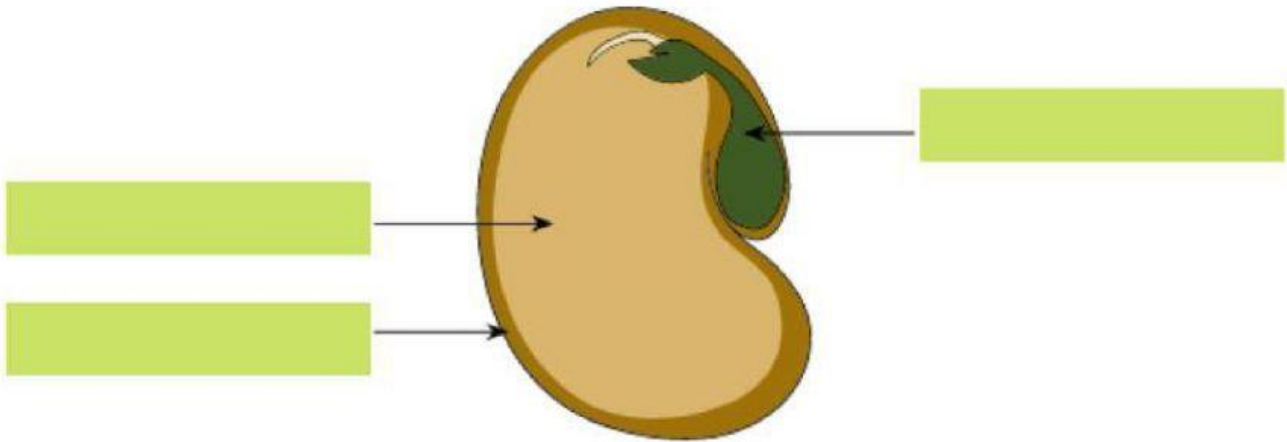


Parts of a Seed

Label the main parts of a seed.



Match the following terms with the correct definition.

Seed Coating

Germination

Cotyledon

Embryo

Dormancy

An immature plant from which a new plant will grow

A store of food for the young plant to use until it has grown enough to make its own food.

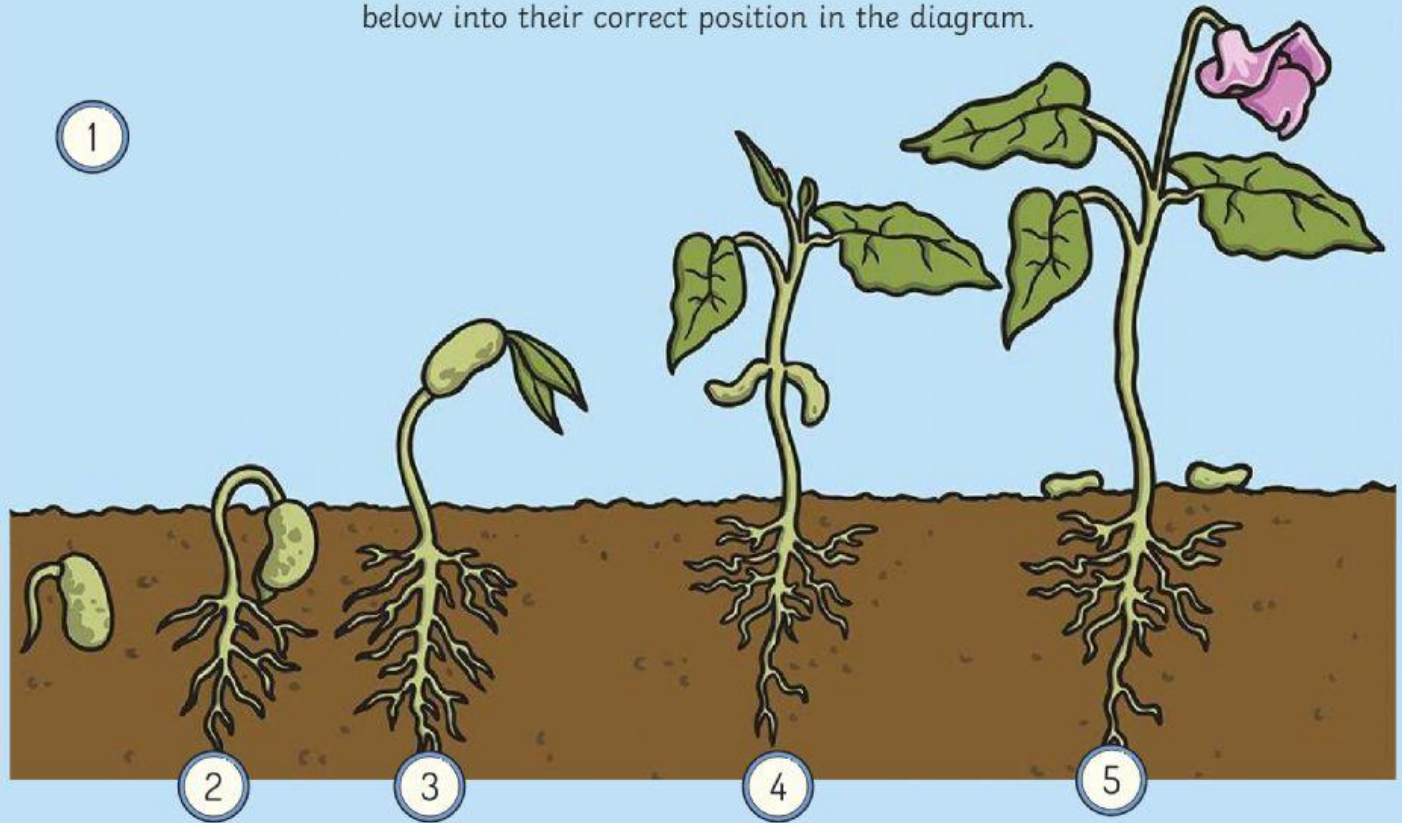
A tough outer covering that protects the inside of the seed.

The growth of a seed into a young plant or a seedling.

A seed's a period of inactivity

How Do Seeds Sprout?

Arrange the events in the germination of a seed. Drag the textboxes below into their correct position in the diagram.



The shoot continues to grow and the cotyledon dries up

The root of the embryo pushes through the seed coat

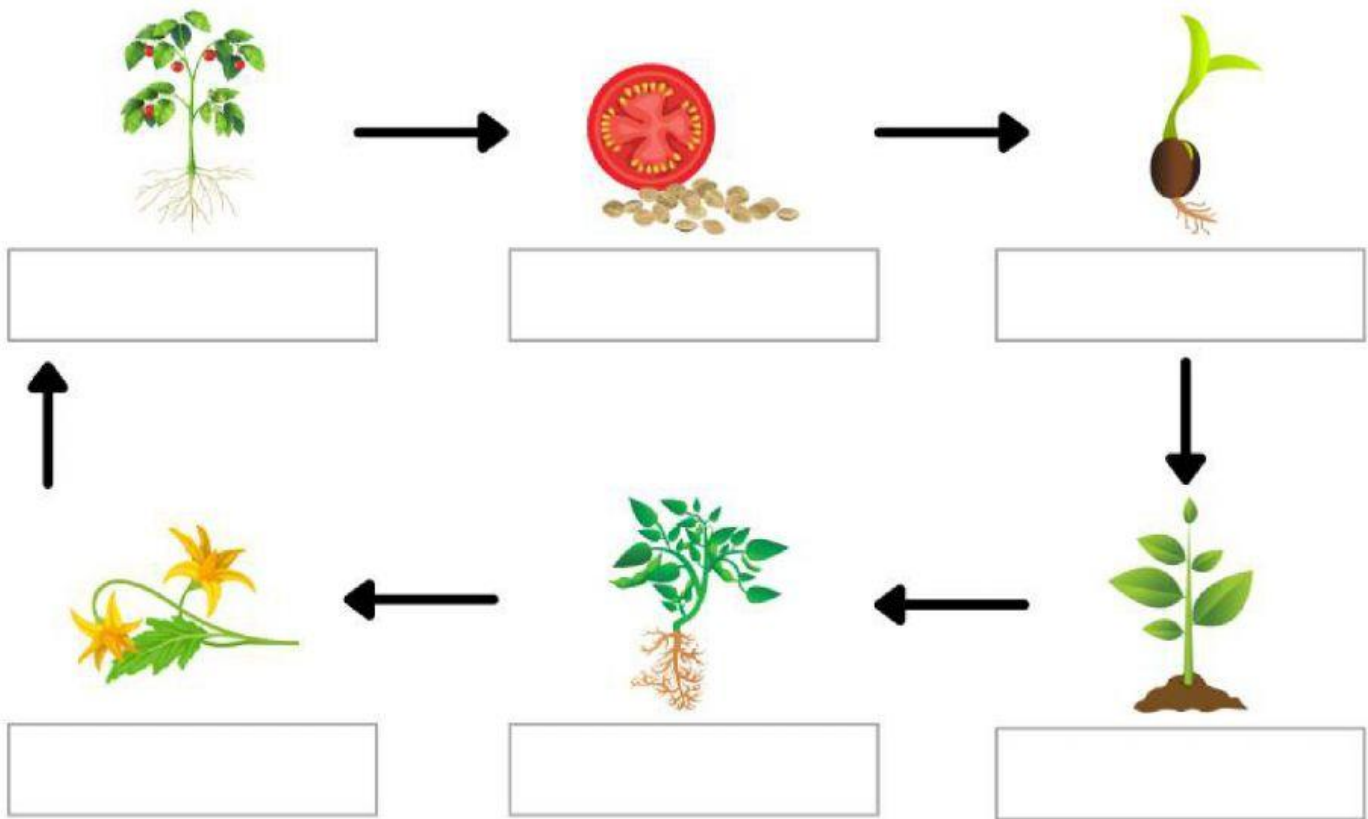
The embryo's tiny leaves start to grow and begin the process of photosynthesis

The seed takes in water and the seed coat splits

The stem pushes the cotyledon above the ground

FLOWERING PLANT LIFE CYCLE

Label the stages of the life cycle of a tomato plant. Drag the terms below into the correct box in the diagram.



Plant flowers

Produces fruit

Seed germinates

Seedling

Adult plant

Fruit releases seeds