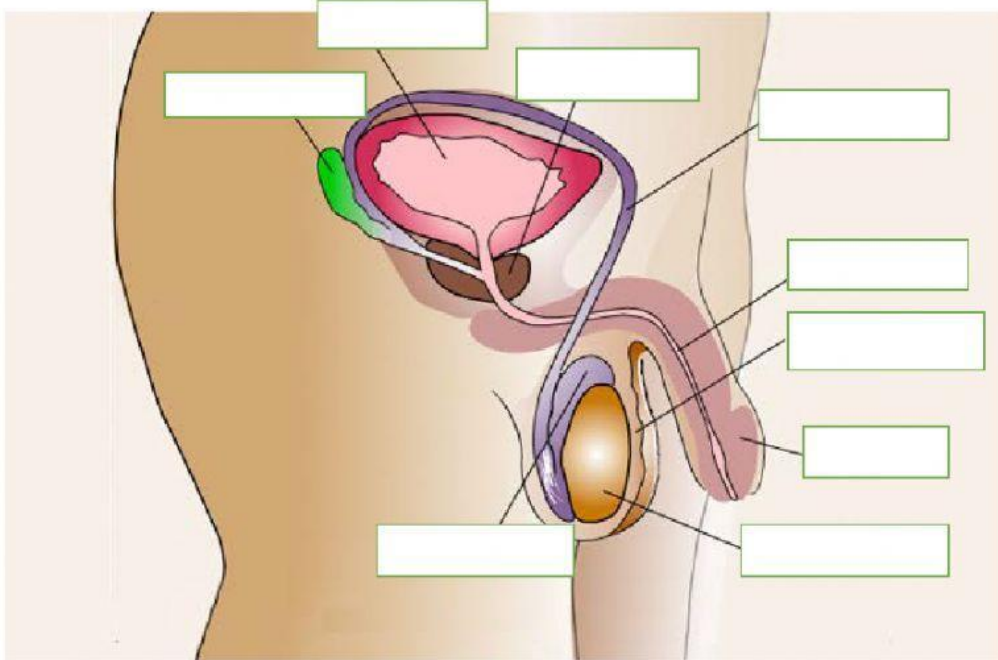


Name: _____

Date: _____

The Male Reproductive System

Label the diagram of the male reproductive system.



Match the function to the correct part of the male reproductive system.

Seminal Vesicle

The sexual organ that produces sperms and testosterone

Prostate gland

A sac which covers the testes and holds them outside the body. It protects the testes.

Urethra

Store sperms and secretes fluid into the sperm ducts.

Testes (testicle)

Secretes fluid into the semen. The fluid activates the sperms.

Penis

Carry sperms from the testes to the urethra.

Epididymis

carries urine from the urinary bladder and sperms from the sperm ducts to outside the body. Semen and urine pass through the urethra at different times.

Sperm ducts (vas deferens)

The organ from which semen leaves the body and is deposited in the female reproductive system.

Scrotum

Matures and stores sperm